

Minnesota Forest Resource Management Directory

Photo courtesy of Serco Loaders



Comprehensive listing of loggers, forest managers, and landowner resources in Minnesota



2022



For over a century, Boise® brand paper has been made with pride at the Packaging Corporation of America mill in International Falls, Minnesota, delivering on our commitment to community, quality and service.

Our “Made in the USA” promise means that we proudly support not only the people we employ but also the communities in which we operate.



218-285-5312

**Minnesota Logger Education Program**

MLEP Introduction	8
Reach Your Woodland Management Objectives	11
County Map of Minnesota	14
Identification Card	15
Associate Members	16
Logger Membership Listings By County	43
Logger Membership Listings By Company	71
MLEP Wood Dealers	100
Woodland Stewardship Plan	104
MFA Officers & Directors	105
Letter from MNWWN	106
MNWWN Board of Directors	107
Index to Advertisers	102



We are PotlatchDeltic Corporation, a verified leader in sustainable forestry. With nearly 1.9 million acres third-party certified to independent forest management standards, we grow trees, sell timber, and manufacture solid wood products. Since 1903, we have sought the common ground that enables us to unlock the value of our lands while conserving our forest for generations to come.

We operate Minnesota's largest sawmill providing markets for pine, spruce and fir from managed forests. Contact us at (218) 759-4302 for more information.



www.potlatchdeltic.com





30021-0

Minnesota Logger Education Program

1111 Cloquet Avenue • Suite 7 • Cloquet, Minnesota 55720

218.879.5633 • info@mlep.org

www.mlep.org



Purchasing Hardwood, Pulpwood & Standing Timber

Competitive Pricing & Prompt Payment

Contact Your Local Forester:

Damon Polus	Cloquet, MN	218-591-3698
Pat Galdonik	Brainerd, MN	218-348-9883
Mike Blomquist	Glidden, WI	906-250-9748
Tom Cunningham	Onamia, MN	218-591-3162
Jack Kline	Cloquet, MN	218-221-4926
Corey Verdegan	Cloquet, MN	218-269-9192
Eric Schram	Cloquet, MN	218-428-3840
Cory Moderson	Hurley, WI	715-862-0899

Minnesota
Procurement Manager
Ross Korpela
218-591-0563

Wisconsin/Michigan
Procurement Manager
Chris Martland
218-591-0554

www.sappi.com

sappi



MLEP is an equal opportunity employer and educational service provider and is committed to ensuring that MLEP programs and benefits are available to all eligible persons, regardless of race, gender, national origin, disability or age.

Membership within the Minnesota Logger Education Program is strictly voluntary and non-regulatory. As such, MLEP and its co-sponsors cannot be held responsible for the actions of business owners who have participated within the program.

MLEP members annually attest to compliance with legal business requirements. MLEP recommends that those who draw on the services of MLEP members verify continued compliance.

For More Information Contact:

**Minnesota Logger Education Program
1111 Cloquet Avenue, Suite 7
Cloquet, Minnesota 55720
(218) 879-5633
info@mlep.org • www.mlep.org**



MLEP Introduction

The Minnesota Logger Education Program is a private, non-profit educational corporation established to help logging business owners better meet the ever-challenging demands of their profession. The program is administrated by a thirteen-member board of directors consisting of representatives of the following:

Bildeaux Services
Blandin Paper - UPM
Erickson Timber Products, Inc.
Hall Logging
Hull Forest Products LLC
Jatco Inc.
Johnson Logging, Inc.
Lundberg Forest Products, Inc.
Minnesota Deer Hunters Association
Minnesota Forestry Association
MN DNR Division of Forestry
U of M Dept. of Forest Resources
Whitefish Creek Enterprises

MLEP was developed through a multi-organizational effort to:

- promote excellence in logger education and professional development within Minnesota's logging industry.
- provide the logging industry with a means of responding to the state legislature's call for sustainable forest resource management as outlined in the 1995 Minnesota Sustainable Forest Resource Act.
- facilitate training programs that benefit loggers by enhancing stability, safety, and environmental awareness.
- improve awareness of laws and guidelines that affect Minnesota's timber harvesting industry.
- provide widespread recognition for logging business owners who complete program requirements.

This directory provides a listing of those logging business owners who have achieved MLEP membership status as well as those who are in the process of completing program requirements. Participation within MLEP reflects the commitment of logging business owners to safe, productive, efficient and environmentally responsible timber harvesting.



PONSSE

HARVESTER OF TOMORROW

The new Scorpion is now here in USA. The best features are the same as before, only further improved. Good visibility, high stability and excellent ergonomics make the Scorpion a popular choice. A more spacious interior and high-quality materials raise the comfort to an entirely new level. Once the door is closed to the outside world, all is quiet, elegant and in the right place.

Active Crane is like an arm that can reach for the tree without needing to think through every motion. It makes the crane easier to use, helping new operators in particular to work more economically and with less stress on the machine. The boom's end damping prevents shocks in extreme positions. This reduces the stress on the crane and improves comfort. The solution is technically simple and remains reliable even in extreme conditions.

PONSSE NORTH AMERICA INC.

2516 US-2
Grand Rapids, MN 55744
Office: 218-327-0711

A logger's best friend

www.ponsse.com



Minnesota Timber Producers Association

The Voice of the Timber Industry Since 1937

Membership Benefits:

- TPA's full time staff keeps you informed and coordinates a total legislative action program
- Timely reporting on proposed legislation and regulations that affect your business
- Receipt of "Timber Bulletin" magazine bi-monthly
- Workers' compensation insurance program
- Drug and alcohol testing program
- Safety and educational programs

Minnesota Timber Producers Association
324 West Superior Street, Suite 903
Duluth, MN 55802
(218) 722-5013



The Minnesota Logger Education Program is proud to support the Log A Load For Kids Program

In 2021, MN Log A Load for Kids contributed \$45,000, and since 1997 has contributed \$648,970 to Gillette Children's through Children's Miracle Network Hospitals. MN Log A Load for Kids supports Gillette's mission, treating children who have brain, bone and movement conditions. This partnership helps Gillette provide comprehensive services, highly trained specialists, an integrated team approach, family-centered care and a lifetime of services to its patients.

To make a direct donation, mail your check (payable to Log A Load For Kids) to the Log A Load For Kids Treasurer:

Brian Lochner, Treasurer
4725 Crosley Avenue
Duluth, MN 55804



Reach Your Woodland Management Objectives

Woodland Management

There are three primary reasons why you may decide to have your timber harvested.

First, a harvest may be prescribed in your overall forest management plan to help you achieve your ownership objectives. Timber harvesting is one of the landowner's major management tools. It is useful for accomplishing objectives such as improving the health and vigor of the forest, promoting natural regeneration, developing wildlife habitat, controlling stand density, releasing an established understory from undesirable overstory trees, altering species composition, establishing planting areas, creating vistas and trails, and developing certain types of recreational activities.

Second, the woodland may be used as a source of income. This may be an objective of the management plan. Timber in good condition may have considerable value and can be managed to yield periodic income.

Third, timber may be harvested to salvage its value. Such a harvest is done to salvage the value of trees that have been damaged to such an extent that they will not recover or when the potential for such damage is extremely high. Wind, ice, snowstorms, fire, insects, and disease could cause enough damage to justify a salvage cutting.

Management Assistance

To achieve your woodland management objectives, you should work with a well-educated timber harvester. To identify MLEP Logging Professionals, check the listings within this directory.

You will find a listing of logging businesses that have completed requirements necessary to achieve MLEP membership, as well as those businesses that are in the process of completing program requirements.

Marketing Your Timber

A professional can assist you in the management of your woodland. Some of the services available include:

- locating boundary lines.
- preparing a forest management plan.
- estimating how much timber is there.
- giving you information about the market.
- preparing and marketing timber sale packages.
- developing a timber sale contract.

Professionals can help ensure that each harvest satisfies your woodland management objectives.



Writing a Good Contract

There are many important components in a good timber sale contract including:

- what timber is being sold.
- the price and terms of the timber sale.
- limitations on the logging operation.
- where log landings, roads, and skid trails will be built.
- erosion controls and other best management practices.
- how the timber you are not selling will be protected.
- responsibility for damages.

A professional can help you understand the many important items to consider when writing a good timber sale contract, much of which will depend on the specifics nature of your woodland and your ownership management objectives.

The Minnesota Logger Education Program

The Minnesota Logger Education Program provides logging business owners with the educational resources necessary to better meet the ever-challenging demands of their profession head-on. Training is focused in the areas of sustainable forest management, transportation, business management & safety. Membership in MLEP is voluntary and reflects the commitment of logging business owners to safe, productive, and environmentally responsible timber harvesting.

Membership Requirements

Provisional Membership Requirements

Non-educational - Items confirmed through participant application process.

- Federal and State ID Numbers
- Unemployment Insurance Number
- Workers Compensation Certificate of Insurance
- Organizational Status of Business
- AWAIR Company Safety Policy
- Substance Abuse Prevention Company Policy
- Signing the MLEP Code of Ethics

Educational - Provisional members are required to complete core introductory environmental and safety training.

- Minnesota Forest Management Guideline Training
- LogSafe CPR/First Aid Training

Full Membership Renewal Requirements

To maintain membership status, the participant must provide verification of non-educational requirements as outlined above and attend:

- 6 hours of MLEP annually
- 12 hours of Log Safe every two years



The Training Sessions

MLEP Workshops - meet the SFI®

Certification Qualified Logging Professional training requirements. Sessions are part of their annual membership requirements. Examples of training topics that have been offered include:

Business Management Topics-

Marketing, Banking Considerations, Business Counseling, Business Plan Writing, Computer Applications, Insurance Coverage, Transportation Regulations, Legislative Issues, Pre-retirement Planning, Public Relations, Timber Availability, and Sales and Use Tax Laws.

Forest Management Topics - Forest Management Guidelines Field Training, Endangered and Threatened Species, Global Positioning Systems, Cut-to-Length Operations, Ecosystem

Management, Silviculture, Spill Clean-up, Timber Cruising, Tree Species Identification, Wildlife Management, and Protecting Site Quality Field Training.

Workplace Safety Topics - AWAIR

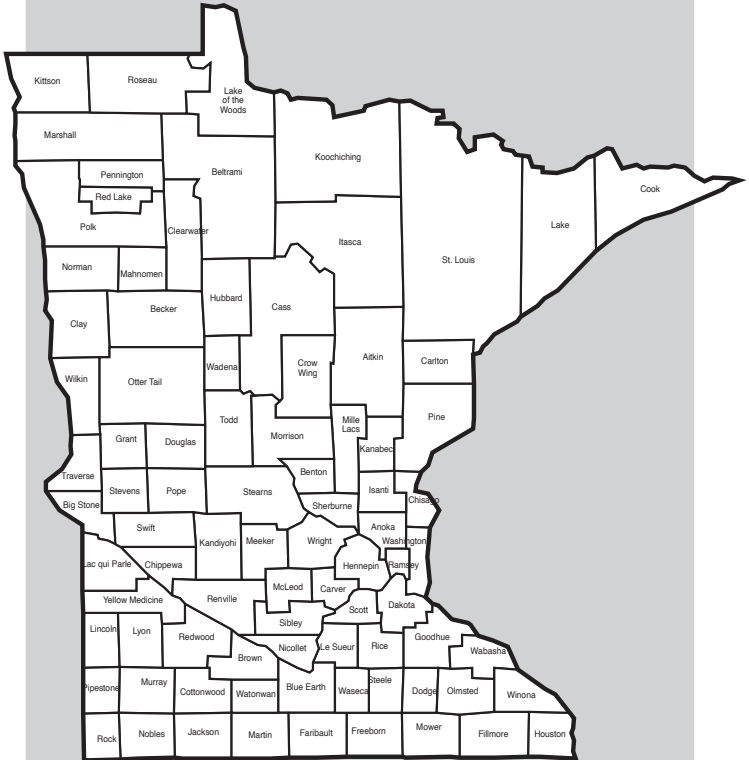
Company Policy Training, LogSafe Training, Lyme Disease Prevention, Skilled Driver Safety, Workers Compensation.

Specific topics incorporated into training sessions will be determined on a year-to-year basis by the MLEP Board of Directors from among the following broad-based topic areas:

- Sustainable Forest Resource Management
- Transportation
- Business Management
- Safety
- Public Policy and Outreach
- Emerging Technologies



County Map of Minnesota



**Identification Card**

Each logger who completes the training program requirements as set by the MN SFI State Implementation Committee training standard, receives a Qualified Logging Profession (QLP) card for the year.

To remain a QLP in Minnesota, an individual must annually complete:

1. 6 hrs. Continuing SFI Education
2. LogSafe program requirements



2022 MLEP MEMBERSHIP DIRECTORY

Alphabetical Listing by Company Name

Minnesota Logger Education Program thanks our Associate Members for demonstrating their support and commitment to logging professionalism. We hope you will seek out our members when looking for needed services for your resource or support service needs.

All associate members receive copies of MLEPs Forest Resource Management Directory, MLEP Newsletters, and membership mailings including training schedules, policy updates, and opportunity announcements.

Associate members are invited to attend MLEP-sponsored forest resource management, workplace safety, and business management training events free of charge or at a reduced member rate.

ASSOCIATE MEMBERS

Associate members support MLEP at one of the following levels:

Benefactor: \$5000

Corporate: \$3000

Sustaining: \$1000

Company: \$300

Affiliate: \$100

Patron: \$50, Non-Industrial
Private landowners (less than
100 acres or school forests)

A

Aitkin County SWCD

Kyle Fredrickson

307 2nd St. NW, Room 216

Aitkin, MN 56431

Ph: (218) 927-7284

kfred.aitkinswcd@gmail.com

aitkincountyswcd.wordpress.com

APEX

Matt Shermoen

Business Developer

306 W Superior St. #902

Duluth, MN 55802

Ph: (218) 740-3667

Cell/Ph2: (218) 324-0474

matt@apexgetsbusiness.com

www.apexgetsbusiness.com

APEX

Brian Hanson

CEO

306 W Superior St. #902

Duluth, MN 55802

Ph: (218) 740-3667

Cell/Ph2: (218) 730-7330

brian@apexgetsbusiness.com

www.apexgetsbusiness.com

**B****Bell Timber, Inc.****Chris Boor****Woodlands Supervisor**

4 Berger Ave.

Barron, WI 54812

Ph: (218) 244-5576

chris.boor@blpole.com

www.blpole.com

Bell Timber, Inc.**Jim Parma****Eastern Fiber Manager**

P.O. Box 946

Moose Lake, MN 55767

Ph: (218) 259-9160

jim.parma@blpole.com

www.blpole.com

Beltrami County Natural Resource Mgmt.**Corey Campbell****Forester**

701 Minnesota Ave. NW, Suite 234

Bemidji, MN 56601-3178

Ph: (218) 333-4210

Fax: (218) 333-8137

corey.campbell@co.beltrami.mn.us

www.co.beltrami.mn.us

Beltrami County Natural Resource Mgmt.**Garret DeChaine****Forester**

701 Minnesota Ave. NW, Suite 234

Bemidji, MN 56601-3178

Ph: (218) 333-4210

Fax: (218) 333-8137

garret.dechaine@co.beltrami.mn.us

www.co.beltrami.mn.us

Beltrami County Natural Resource Mgmt.**Marshall Graham****Forester**

701 Minnesota Ave. NW, Suite 234

Bemidji, MN 56601-3178

Ph: (218) 333-4210

Fax: (218) 333-8137

marshall.graham@co.beltrami.mn.us

www.co.beltrami.mn.us

Beltrami County Natural Resource Mgmt.**Richard Moore****Land Commissioner/NRM Director**

701 Minnesota Ave. NW, Suite 234

Bemidji, MN 56601-3178

Ph: (218) 333-4210

Fax: (218) 333-8137

richard.moore@co.beltrami.mn.us

www.co.beltrami.mn.us

Beltrami County Natural Resource Mgmt.**Nick Ronning****Forester**

701 Minnesota Ave. NW, Suite 234

Bemidji, MN 56601-3178

Ph: (218) 333-4210

Fax: (218) 333-8137

nicholas.ronning@co.beltrami.mn.us

www.co.beltrami.mn.us



2022 MLEP MEMBERSHIP DIRECTORY

Alphabetical Listing by Company Name

Blandin Forestry

James Berkeland Forester

115 SW 1st St.
Grand Rapids, MN 55744
Ph: (218) 327-6385
Cell/Ph2: (218) 244-4574
Fax: (218) 327-6387
jim.berkeland@upm.com
www.upm.com/blandin

Blandin Forestry

Greg Duwe Forester

115 SW 1st St.
Grand Rapids, MN 55744
Ph: (218) 327-6604
Cell/Ph2: (218) 244-5173
Fax: (218) 327-6387
greg.duwe@upm.com
www.upm.com/blandin

Blandin Forestry

Darin Erickson Forester

115 SW 1st St.
Grand Rapids, MN 55744
Ph: (218) 327-6605
Cell/Ph2: (320) 310-9532
Fax: (218) 327-6387
darin.erickson@upm.com
www.upm.com/blandin

Blandin Forestry

Ryan Isaacson Forester

115 SW 1st St.
Grand Rapids, MN 55744
Ph: (218) 327-6482
Cell/Ph2: (218) 259-4899
Fax: (218) 327-6387
ryan.isaacson@upm.com
www.upm.com/blandin

Blandin Forestry

Quintin Legler, CF Forest Resources Manager

115 SW 1st St.
Grand Rapids, MN 55744
Ph: (218) 327-6304
Cell/Ph2: (218) 244-2574
Fax: (218) 327-6387
quintin.legler@upm.com
www.upm.com/blandin

Blandin Forestry

Sawyer Scherer Forest Ecologist

115 SW 1st St.
Grand Rapids, MN 55744
Ph: (218) 327-6602
Cell/Ph2: (763) 370-1681
Fax: (218) 327-6387
sawyer.scherer@upm.com
www.upm.com/blandin



Blandin Forestry

Adam Sutherland

Marketing Forester

115 SW 1st St.

Grand Rapids, MN 55744

Ph: (218) 327-6238

Cell/Ph2: (218) 244-5393

Fax: (218) 327-6387

adam.sutherland@upm.com

www.upm.com/blandin

Bleiler, CF, Carl

SAF Certified Forester

125 Harriet Ave. SW

Solway, MN 56678

Ph: (218) 556-5085

cbleiler@paulbunyan.net

C

Carlton County Land Dept.

Greg Bernu

Land Commissioner

1630 County Road 61

Carlton, MN 55718

Ph: (218) 384-9179

greg.bernu@co.carlton.mn.us

www.co.carlton.mn.us

Carlton County Land Dept.

Mark Westphal

Forester

1630 County Road 61

Carlton, MN 55718

Ph: (218) 384-9179

mark.westphal@co.carlton.mn.us

www.co.carlton.mn.us

Cass County Land Department

Pat Bundy

Forest Resource Manager

P.O. Box 25

218 Washburn Ave. E

Backus, MN 56435

Ph: (218) 947-7502

Fax: (218) 947-3230

www.co.cass.mn.us

Cass County Land Department

Kim Frame

Forest Resource Manager

P.O. Box 25

218 Washburn Ave. E

Backus, MN 56435

Ph: (218) 947-7507

Fax: (218) 947-3230

www.co.cass.mn.us

Cass County Land Department

Erik Lindquist

Forest Resource Manager

P.O. Box 25

218 Washburn Ave. E

Backus, MN 56435

Ph: (218) 947-7505

Fax: (218) 947-3230

www.co.cass.mn.us



2022 MLEP MEMBERSHIP DIRECTORY

Alphabetical Listing by Company Name

Cass County Land Department

Amy Rand

Forest Resource Manager

P.O. Box 25
218 Washburn Ave. E
Backus, MN 56435
Ph: (218) 947-7508
Fax: (218) 947-3230
www.co.cass.mn.us

Cass County Land Department

Kirk Titus

Land Commissioner

P.O. Box 25
218 Washburn Ave. E
Backus, MN 56435
Ph: (218) 947-7501
Fax: (218) 947-3230
kirk.titus@co.cass.mn.us
www.co.cass.mn.us

Cass County Land Department

Elena Wiley

Forest Resource Manager

P.O. Box 25
218 Washburn Ave. E
Backus, MN 56435
Ph: (218) 947-7503
Fax: (218) 947-3230
www.co.cass.mn.us

Cass Forest Products, Inc.

David Goetz

CEO

P.O. Box 1008
6250 S 1st St.
Cass Lake, MN 56633
Ph: (218) 335-2694
Cell/Ph2: (218) 556-6659
Fax: (218) 335-2383
dave@cassforest.com
www.cassforest.com

Cass Forest Products, Inc.

Andrew Mascia

General Manager

P.O. Box 1008
6250 S 1st St.
Cass Lake, MN 56633
Ph: (218) 556-6659
Cell/Ph2: (218) 556-6659
Fax: (218) 335-2383
andrew@cassforest.com
www.cassforest.com

Choice Insurance

Jay Eystad

605 Forest View Ave.
Park Rapids, MN 56470
Ph: (218) 255-0446
Cell/Ph2: (218) 255-0446
Toll Free: (800) 676-8818
Fax: (952) 829-0482
j.eystad@insurewithchoice.com
bankwithchoice.com/lumber

**Clearwater County Land & Forestry****John Blake****Forester**

213 Main Ave. N

Dept. 107

Bagley, MN 56621

Ph: (218) 694-6227

Fax: (218) 694-3223

john.blake@co.clearwater.mn.us

www.co.clearwater.mn.us

Clearwater County Land & Forestry**Bruce Cox****Land Commissioner**

213 Main Ave. N

Dept. 107

Bagley, MN 56621

Ph: (218) 694-6227

Fax: (218) 694-3223

bruce.cox@co.clearwater.mn.us

www.co.clearwater.mn.us

Compeer Financial**John Marchand****Sr. Timber Lending Specialist**

4960 Miller Trunk Hwy., Suite 400

Hermantown, MN 55811

Cell/Ph2: (218) 216-3989

Toll Free: (844) 426-6733

Fax: (715) 318-0592

John.Marchand@compeer.com

www.compeer.com

Compeer Financial**Julie Miles****Associate Timber Lending Specialist**

4960 Miller Trunk Hwy., Suite 400

Hermantown, MN 55811

Cell/Ph2: (218) 290-2260

Toll Free: (844) 426-6733

Fax: (715) 318-0592

julie.miles@compeer.com

www.compeer.com

Corporate 4 Insurance Agency, Inc.**Jeff Lamb**

7220 Metro Blvd.

Edina, MN 55439

Ph: (952) 893-9218

Fax: (952) 893-9402

jlamb@corporatefour.com

www.corporatefour.com

Corporate 4 Insurance Agency, Inc.**Steve Meyer**

7220 Metro Blvd.

Edina, MN 55439

Ph: (952) 893-9218

Fax: (952) 893-9402

smeyer@corporatefour.com

www.corporatefour.com

Corporate 4 Insurance Agency, Inc.**Jim Zigo**

7220 Metro Blvd.

Edina, MN 55439

Ph: (952) 893-9218

Fax: (952) 893-9402

jzigo@corporatefour.com

www.corporatefour.com



2022 MLEP MEMBERSHIP DIRECTORY

Alphabetical Listing by Company Name

Crow Wing County Land Services

Department

Mitch Lundeen

Environmental Services Specialist

15728 State Hwy. 210

Brainerd, MN 56401

Ph: (218) 824-1353

mitch.lundeen@crowwing.us

www.crowwing.us

Crow Wing County Land Services

Department

Ryan Simonson

Environmental Services Supervisor

15728 State Hwy. 210

Brainerd, MN 56401

Ph: (218) 824-1355

ryan.simonson@crowwing.us

www.crowwing.us

Crow Wing County Land Services

Department

Tom Strack

Environmental Services Specialist

15728 State Hwy. 210

Brainerd, MN 56401

Ph: (218) 824-1138

tom.strack@crowwing.us

www.crowwing.us

D

Dickinson Timber

Jeff Peterson

General Manager

P.O. Box 180

557 Clark Ave. South

Kelliher, MN 56650

Ph: (218) 647-2444

Fax: (218) 647-2445

dickinsontimber@paulbunyan.net

dickinsontimber.com

DNR - St. Paul Headquarters

Forrest Boe

Director and State Forester

500 Lafayette Rd.

St. Paul, MN 55155

Ph: (651) 259-5300

Fax: (651) 296-5954

forrest.boe@state.mn.us

www.dnr.state.mn.us

E

Elstad Enterprises

Gregory Elstad

Consulting Forester (Retired)

2336 Lac La Belle Rd.

Carlton, MN 55718

Ph: (218) 590-9689

Cell/Ph2: (218) 590-9689

Erickson Timber Products, Inc. (Assoc)

Dale Erickson

1801 State Hwy. 72 SE

Baudette, MN 56623

Ph: (218) 556-1868

ericksontimber@wiktel.com

**Erickson Timber Products, Inc. (Assoc)****Cameron Erickson**

1801 State Hwy. 72 SE
Baudette, MN 56623
Ph: (218) 556-2535
ericksonstimber@wiktel.com

Evans Insurance Agency, Inc.**Don & Sam Evans****Owner/Agent**

607 NW 5th St.
Grand Rapids, MN 55744
Ph: (218) 326-0563
Cell/Ph2: (218) 398-0063
Fax: (218) 327-4974
sam@evansins.com
www.evansins.com

G**Greater Insurance Service of NE MN Inc.****Michael Kane**

407 S Pokegama Ave.
Grand Rapids, MN 555744
Ph: (218) 327-1854
Fax: (218) 999-0393
mkane@gismn.com
www.gismn.com

H**Hawkins Sawmill, Inc.****Tom Hawkins**

15132 280th Ave.
Isle, MN 56342
Ph: (320) 676-8479
Cell/Ph2: (320) 515-0585
hawkinssawmill@yahoo.com
www.hawkinssawmill.com

Hedstrom Lumber Co., Inc.**Kent Anderson**

1504 Gunflint Trail
Grand Marais, MN 55604
Ph: (218) 370-8918
Cell/Ph2: (218) 370-8918
Fax: (218) 387-2204
andersonlogging@live.com
www.hedstromlumber.com

Hedstrom Lumber Co., Inc.**Jeff Elliott**

1610 3rd Ave N
Virginia, MN 55792
Ph: (218) 288-0028
Cell/Ph2: (218) 750-2700
Fax: (218) 387-2204
www.hedstromlumber.com

Hedstrom Lumber Co., Inc.**Chris Hegg****President**

1504 Gunflint Trail
Grand Marais, MN 55604
Ph: (218) 877-7031
Cell/Ph2: (218) 370-0312
Fax: (218) 387-2204
chris@hedstromlumber.com
www.hedstromlumber.com

Hedstrom Lumber Co., Inc.**Steve Horndt**

1504 Gunflint Trail
Grand Marais, MN 55604
Cell/Ph2: (586) 596-2232
Fax: (218) 387-2204
steve@hedstromlumber.com



2022 MLEP MEMBERSHIP DIRECTORY

Alphabetical Listing by Company Name

Hubbard County Natural Resource Mgmt.

Aaron Funk

101 Crocus Hill Street
Park Rapids, MN 56470
Ph: (218) 732-4270
Fax: (218) 732-7640
aaron.funk@co.hubbard.mn.us
www.co.hubbard.mn.us

Hubbard County Natural Resource Mgmt.

Kory Jorgensen

101 Crocus Hill Street
Park Rapids, MN 56470
Ph: (218) 732-4270
Fax: (218) 732-7640
kory.jorgensen@co.hubbard.mn.us
www.co.hubbard.mn.us

Hubbard County Natural Resource Mgmt.

Jacob Keranen

101 Crocus Hill Street
Park Rapids, MN 56470
Ph: (218) 732-4270
Fax: (218) 732-7640
jacob.keranen@co.hubbard.mn.us
www.co.hubbard.mn.us

Hubbard County Natural Resource Mgmt.

Mark (Chip) Lohmeier

Land Commissioner

101 Crocus Hill Street
Park Rapids, MN 56470
Ph: (218) 732-4270
Cell/Ph2: (218) 252-0416
Fax: (218) 732-7640
mark.lohmeier@co.hubbard.mn.us
www.co.hubbard.mn.us

Hubbard County Natural Resource Mgmt.

Mitchell Ness

101 Crocus Hill Street
Park Rapids, MN 56470
Ph: (218)73204270
Fax: (218) 732-7640
mitchell.ness@co.hubbard.mn.us
www.co.hubbard.mn.us



Industrial Lubricant Company

Andy Haarklau

President

P. O. Box 70
35108 Hwy. 2 W
Grand Rapids, MN 55744
Ph: (218) 328-0273
Cell/Ph2: (218) 259-3115
ahaarklau@indlube.com
www.industriallubricant.com

Industrial Lubricant Company

Pete Wohlers

Branch Manager

P. O. Box 70
35108 Hwy. 2 W
Grand Rapids, MN 55744
Ph: (218) 328-0278
Cell/Ph2: (218) 259-3115
pwohlers@indlube.com
www.industriallubricant.com

**Itasca County Land Dept.****Kory Cease****Itasca County Land Commissioner**

1177 LaPrairie Ave.
Grand Rapids, MN 55744
Ph: (218) 327-2855
Fax: (218) 327-4160
kory.cease@co.itsca.mn.us
co.itsca.mn.us/233/Land-Department

Itasca County Land Dept.**Mike Gibbons****Assistant Land Commissioner**

1177 LaPrairie Ave.
Grand Rapids, MN 55744
Ph: (218) 327-7357
michael.gibbons@co.itsca.mn.us
co.itsca.mn.us/233/Land-Department

Itasca Woodland Services, Inc.**Marissa Berguson****Office Administrator**

920 US 2 East
P.O. Box 5100
Grand Rapids, MN 55744
Ph: (218) 208-5791
Cell/Ph2: (218) 252-8572
Fax: (218) 328-8005
officeadmin@iwsconsulting.com
www.iwsconsulting.com

Itasca Woodland Services, Inc.**Stan Grossman****CEO & Forester**

920 US 2 East
P.O. Box 5100
Grand Rapids, MN 55744
Ph: (218) 252-8572
Cell/Ph2: (218) 252-8572
Fax: (218) 328-8005
stan@iwsconsulting.com
www.iwsconsulting.com

Itasca Woodland Services, Inc.**Carlie Haben****Forester**

920 US 2 East
P.O. Box 5100
Grand Rapids, MN 55744
Ph: (218) 210-7196
Cell/Ph2: (218) 252-8572
Fax: (218) 328-8005
carlie@iwsconsulting.com
www.iwsconsulting.com

Itasca Woodland Services, Inc.**Zach Hanson****Forester**

920 US 2 East
P.O. Box 5100
Grand Rapids, MN 55744
Ph: (218) 328-8070
Cell/Ph2: (218) 252-8572
Fax: (218) 328-8005
zach@iwsconsulting.com
www.iwsconsulting.com



2022 MLEP MEMBERSHIP DIRECTORY

Alphabetical Listing by Company Name

Itasca Woodland Services, Inc.

Beau Molitor

Forester

920 US 2 East
P.O. Box 5100
Grand Rapids, MN 55744
Ph: (218) 203-3336
Cell/Ph2: (218) 252-8572
Fax: (218) 328-8005
beau@iwsconsulting.com
www.iwsconsulting.com

K

Klinner Insurance, Inc.

Jason Steliga

P.O. Box 527
738 E Perkins St.
Medford, WI 54451
Ph: (715) 748-4488
Toll Free: (800) 934-LOGS (5647)
Fax: (715) 748-4895
jsteliga@klinnerinsurance.com
www.klinnerinsurance.com

Klinner Insurance, Inc.

Lonny Techel

P.O. Box 527
738 E Perkins St.
Medford, WI 54451
Ph: (715) 748-4488
Cell/Ph2: (715) 218-1197
Toll Free: (800) 934-LOGS (5647)
Fax: (715) 748-4895
ltechel@klinnerinsurance.com
www.klinnerinsurance.com

Klinner Insurance, Inc.

Butch Wiegel

P.O. Box 527
738 E Perkins St.
Medford, WI 54451
Ph: (715) 748-4488
Toll Free: (800) 934-LOGS (5647)
Fax: (715) 748-4895
bwiegel@klinnerinsurance.com
www.klinnerinsurance.com

Koochiching County Land & Forestry Dept.

Nathan Heibel

Land Commissioner

715 4th St., Courthouse
International Falls, MN 56649
Ph: (218) 283-1127
Fax: (218) 283-1129
nathan.heibel@co.koochiching.mn.us
www.co.koochiching.mn.us

Koochiching SWCD

James Aasen

501 3rd St., Suite 201
International Falls, MN 56649
Ph: (218) 283-1175
james.aasen@co.koochiching.mn.us
koochichingswcd.org

Koochiching SWCD

Ralph Lewis

501 3rd St., Suite 201
International Falls, MN 56649
Ph: (218) 634-2048
koochichingswcd.org



Koochiching SWCD

Sam Soderman

501 3rd St., Suite 201
International Falls, MN 56649
Ph: (218) 283-1176
sam.soderman@koochichingswcd.org
koochichingswcd.org

L

Lake County Forestry

Nathan Eide

Land Commissioner

601 3rd Ave.
Two Harbors, MN 55616
Ph: (218) 834-8340
Fax: (218) 834-8346
nate.eide@co.lake.mn.us
www.co.lake.mn.us/forestry

Lake County Forestry

Leigh Neitzel

Deputy Land Commissioner

601 3rd Ave.
Two Harbors, MN 55616
Ph: (218) 834-8340
Cell/Ph2: (218) 510-0601
Fax: (218) 834-8346
leigh.neitzel@co.lake.mn.us
www.co.lake.mn.us/forestry

Land O Lakes Wood Preserving Co.

Aaron Anderson

P.O. Box 87
171 3rd Ave. N
Tenstrike, MN 56683
Ph: (218) 586-2203
Fax: (218) 586-2005
www.landolakeswood.com

Land O Lakes Wood Preserving Co.

Ben Fellows

P.O. Box 87
171 3rd Ave. N
Tenstrike, MN 56683
Ph: (218) 586-2203
Fax: (218) 586-2005
www.landolakeswood.com

Land O Lakes Wood Preserving Co.

Jeff Jung

P.O. Box 87
171 3rd Ave. N
Tenstrike, MN 56683
Ph: (218) 586-2203
Fax: (218) 586-2005
www.landolakeswood.com

Land O Lakes Wood Preserving Co.

Joan Pomp

President

P.O. Box 87
171 3rd Ave. N
Tenstrike, MN 56683
Ph: (218) 586-2203
Fax: (218) 586-2005
lolwp@paulbunyan.net
www.landolakeswood.com

Land O Lakes Wood Preserving Co.

Dave Pomp

P.O. Box 87
171 3rd Ave. N
Tenstrike, MN 56683
Ph: (218) 586-2203
Fax: (218) 586-2005
www.landolakeswood.com



2022 MLEP MEMBERSHIP DIRECTORY

Alphabetical Listing by Company Name

Lonza Greenwood LLC

Ellen Barnes

1101 NW 3rd St.
Cohasset, MN 55721
Ph: (218) 328-5870
Fax: (218) 328-5882
ellen.barnes@lonza.com
www.lonza.com

Lonza Greenwood LLC

Robert Bourman

1101 NW 3rd St.
Cohasset, MN 55721
Ph: (218) 328-5870
Fax: (218) 328-5882
www.lonza.com

Lonza Greenwood LLC

Gordon Fothergill

1101 NW 3rd St.
Cohasset, MN 55721
Ph: (218) 328-5870
Fax: (218) 328-5882
gordon.fothergill@lonza.com
www.lonza.com

LP Building Solutions

Brian Gulseth

Resource Manager

711 25th Ave.
Two Harbors, MN 55616
Ph: (715) 580-0379
Cell/Ph2: (715) 580-0379
brian.gulseth@lpcorp.com
www.lpcorp.com

LP Building Solutions

Chad Morgan

Resource Manager

16571 W US Hwy. 63
Hayward, WI 54843
Ph: (715) 634-5473
Cell/Ph2: (715) 558-0622
chad.morgan@lpcorp.com
www.lpcorp.com

LP Building Solutions

Tim Pulskamp

Resource Manager

16571 W US Hwy. 63
Hayward, WI 54843
Ph: (715) 634-5471
Cell/Ph2: (715) 558-4379
Fax: (715) 634-1759
Tim.Pulskamp@lpcorp.com
www.lpcorp.com

LP Building Solutions

Dan Toivonen

Siding Business Manager

16571 W US Hwy. 63
Hayward, WI 54843
Ph: (715) 634-5585
Cell/Ph2: (715) 558-5456
Dan.Toivonen@lpcorp.com
www.lpcorp.com

**M****Mala Mills LLC****Adam Johannes**

1100 4th St. NW
Little Falls, MN 56345
Ph: (320) 412-0172
Cell/Ph2: (320) 980-0567
www.malamills.com

Mala Mills LLC**Wayne Lease****General Manager**

1100 4th St. NW
Little Falls, MN 56345
Ph: (320) 980-0657
Cell/Ph2: (320) 980-0567
wayne.lease@malamills.com
www.malamills.com

Mala Mills LLC**Tyler Leblanc**

1100 4th St. NW
Little Falls, MN 56345
Ph: (320) 412-0172
Cell/Ph2: (320) 980-0567
www.malamills.com

Mala Mills LLC**Zach Rakow-Batters**

1100 4th St. NW
Little Falls, MN 56345
Ph: (320) 412-0172
Cell/Ph2: (320) 980-0567
www.malamills.com

Mala Mills LLC**Wesley Roberts**

1100 4th St. NW
Little Falls, MN 56345
Ph: (320) 412-0172
Cell/Ph2: (320) 980-0567
www.malamills.com

Maverick Wood Products LLC**Michael Frey**

407 Lake St. E, Suite 201
Wayzata, MN 55391
Ph: (612) 298-1743
michael@maverickwoodproducts.com
maverickwoodproducts.com

McCoy Construction and Forestry, Inc.**Todd Rohloff****General Manager**

34316 US Hwy. 2
Grand Rapids, MN 55744
Ph: (218) 326-9427
Cell/Ph2: (218) 244-5815
toddrohloff@mccoycf.com
www.mccoycf.com

Mid-States Hydraulics**John Gummerson**

611 Jensen Dr.
Medford, WI 54451
Ph: (715) 748-5565
Fax: (715) 748-4042
sales@midstateshydraulics.com
www.midstateshydraulics.com



2022 MLEP MEMBERSHIP DIRECTORY

Alphabetical Listing by Company Name

Mid-States Hydraulics

Tim Soley

611 Jensen Dr.
Medford, WI 54451
Ph: (715) 748-5565
Cell/Ph2: (715)965-0046
Fax: (715) 748-4042
sales@midstateshydraulics.com
www.midstateshydraulics.com

Mid-States Hydraulics

Kevin Thorson

611 Jensen Dr.
Medford, WI 54451
Ph: (715) 748-5565
Cell/Ph2: (715) 965-2676
Fax: (715) 748-4042
sales@midstateshydraulics.com
www.midstateshydraulics.com

Minnesota Forest Resources Council

Sadie Mathison Information Specialist

201A and C Green Hall
1530 Cleveland Ave. N
St. Paul, MN 55108
Ph: (651) 603-6761
Cell/Ph2: (651) 263-4115
sadie.mathison@state.mn.us
mn.gov/frc/

Minnesota Forest Resources Council

Eric Schenck

Executive Director
201A and C Green Hall
1530 Cleveland Ave. N
St. Paul, MN 55108
Ph: (651) 247-1367
eric.schenck@state.mn.us
mn.gov/frc/

Minnesota Forestry Association

Dave Roerick

President
P.O. Box 6060
Grand Rapids, MN 55744
Ph: (218) 879-5100
president@minnesotaforestry.org
www.minnesotaforestry.org

Minnesota Power

Matt Radzak Renewable Fuels Coordinator

30 W Superior St.
Duluth, MN 55802
Ph: (218) 355-3543
Cell/Ph2: (218) 590-8490
mradzak@mnpower.com
www.mnpower.com

MN SFI State Implementation Committee

Rick Horton

324 W Superior St. #903
Duluth, MN 55802
Ph: (218) 722-0128
Fax: (218) 722-2065



Molpus Woodlands Group, LLC

Craig Halla

MN Property Manager

312 8th Ave.

International Falls, MN 56649

Ph: (218) 285-7375

Cell/Ph2: (218) 324-0806

Fax: (218) 285-7706

challa@molpus.com

www.molpuswoodlands.com

Molpus Woodlands Group, LLC

Roger Johnson

Forester

312 8th Ave.

International Falls, MN 56649

Ph: (218) 285-7375

Cell/Ph2: (218) 244-7156

Fax: (218) 285-7706

rjohnson@molpus.com

www.molpuswoodlands.com

Molpus Woodlands Group, LLC

Sam Maass

Forester

312 8th Ave.

International Falls, MN 56649

Ph: (218) 285-7375

Cell/Ph2: (218) 244-3460

Fax: (218) 285-7706

smaass@molpus.com

www.molpuswoodlands.com

Molpus Woodlands Group, LLC

Marty Schoewe

Forester

312 8th Ave.

International Falls, MN 56649

Ph: (218) 285-7375

Cell/Ph2: (218) 244-3461

Fax: (218) 285-7706

mschoewe@molpus.com

www.molpuswoodlands.com

Molpus Woodlands Group, LLC

Harold Wennerstrand

Forester

312 8th Ave.

International Falls, MN 56649

Ph: (218) 285-7375

Cell/Ph2: (218) 244-3462

Fax: (218) 285-7706

hwennerstrand@molpus.com

www.molpuswoodlands.com

N

Northern Timberline Equipment

Ivan Bortnik

6000 County Rd. 8

Littlefork, MN 56653

Ph: (218) 278-6203

Cell/Ph2: (218) 244-5201

Fax: (218) 278-6716

ntequip@frontier.com

www.northerntimberline.com



2022 MLEP MEMBERSHIP DIRECTORY

Alphabetical Listing by Company Name

Northern Timberline Equipment

Cameron Hardwig

6000 County Rd. 8
Littlefork, MN 56653
Ph: (218) 278-6203
Cell/Ph2: (218) 244-5201
Fax: (218) 278-6716
ntequip@frontier.com
www.northerntimberline.com

Northern Timberline Equipment

Chris Horton

6000 County Rd. 8
Littlefork, MN 56653
Ph: (218) 278-6203
Cell/Ph2: (218) 244-5201
Fax: (218) 278-6716
www.northerntimberline.com

P

Packaging Corporation of America

Howard Arch

Procurement Forester

400 3rd Ave. E
International Falls, MN 56649
Ph: (218) 285-5524
Cell/Ph2: (218) 417-0750
Fax: (218) 285-5211
HowardArch@packagingcorp.com
www.boisepaper.com/company

Packaging Corporation of America

John Berglund

Procurement Forester

400 3rd Ave. E
International Falls, MN 56649
Ph: (218) 285-5306
Cell/Ph2: (218) 244-3456
Fax: (218) 285-5211
JohnBerglund@packagingcorp.com
www.boisepaper.com/company

Packaging Corporation of America

Dan Klocek

Procurement Forester

400 3rd Ave. E
International Falls, MN 56649
Ph: (218) 285-5273
Cell/Ph2: (218) 244-3455
Fax: (218) 285-5211
danielklocek@packagingcorp.com
www.boisepaper.com/company

Packaging Corporation of America

Mary Perala

Procurement Forester

400 3rd Ave. E
International Falls, MN 56649
Ph: (218) 285-5334
Cell/Ph2: (218) 324-0836
Fax: (218) 285-5211
MaryPerala@packagingcorp.com
www.boisepaper.com/company

**Packaging Corporation of America****Mac Schafer****Procurement Forester**

400 3rd Ave. E
International Falls, MN 56649
Ph: (218) 285-5450
Cell/Ph2: (218) 324-1069
Fax: (218) 285-5211
MakenzieSchafer@packagingcorp.com
www.boisepaper.com/company

Packaging Corporation of America**Eric Todd****Procurement Forester**

400 3rd Ave. E
International Falls, MN 56649
Ph: (218) 285-5768
Cell/Ph2: (218) 324-2631
Fax: (218) 285-5211
EricTodd@packagingcorp.com
www.boisepaper.com/company

Park Falls Hardwoods**Lynn Erickson**

2137 Harbor St.
Mora, MN 55051
Ph: (320) 679-4440
Cell/Ph2: (715) 661-0501
Fax: (320) 679-9462
lynn Erickson@midwesthardwood.com
midwesthardwood.com/park-falls-
hardwoods

PetroChoice**Jerry Johnson****Territory Sales Manager**

700 W. Drive
Chisholm, MN 55719
Ph: (218) 888-2237
Fax: (715) 392-9224
www.petrochoice.com

PetroChoice**Pete Prochaska****Territory Sales Manager**

3301 James Day Ave.
Superior, WI 54880
Ph: (218) 590-3458
Fax: (715) 392-9224
www.petrochoice.com

Pine County SWCD**Paul Swanson****Forester**

1610 Hwy. 23 N
Sandstone, MN 55072
Ph: (320) 216-4245
Fax: (320) 216-4244
www.pineswcd.com

Pomp's Tire Service**Brian Shaver**

116 Ogden Ave.
Superior, WI 54880
Ph: (800) 420-6216
Cell/Ph2: (218) 391-5040
Toll Free: (800) 420-6216
Fax: (715) 398-0865
bshaver@pompstire.com
www.pompstire.com



2022 MLEP MEMBERSHIP DIRECTORY

Alphabetical Listing by Company Name

Ponsse North America, Inc.

Paul Estabrooks

2516 E Hwy. 2
Grand Rapids, MN 55744
Ph: (218) 327-0711
Cell/Ph2: (218) 327-0711
paul.estabrooks@ponsse.com
www.ponsse.com

Ponsse North America, Inc.

Diana Olkowski

4400 International Ln.
Rhineland, WI 54501
Ph: (715) 369-4833
diana.olkowski@ponsse.com
www.ponsse.com

PotlatchDeltic Land & Lumber LLC

Brian Bignall

Wood Procurement Mgr.

50518 County 45
Bemidji, MN 56601
Ph: (218) 759-4302
Cell/Ph2: (218) 368-3750
Fax: (218) 751-0425
brian.bignall@potlatchdeltic.com
www.potlatchdeltic.com

PotlatchDeltic Land & Lumber LLC

Andy Craner

Plant Manager

50518 County 45
Bemidji, MN 56601
Ph: (208) 568-1318
Cell/Ph2: (208) 568-1318
andy.craner@potlatchdeltic.com
www.potlatchdeltic.com

PotlatchDeltic Land & Lumber LLC

Michael Houser

Manager, Certification & Environment

105 Arch St.
Cloquet, MN 55720
Ph: (218) 879-0426
Cell/Ph2: (218) 368-3750
Fax: (218) 879-0452
mike.houser@potlatchdeltic.com
www.potlatchdeltic.com

PotlatchDeltic Land & Lumber LLC

Eric Olson

Procurement Forester

35783 18th Ave.
Motley, MN 56466
Ph: (218) 759-4302
Cell/Ph2: (320) 360-9639
Fax: (509) 343-2814
eric.olson@potlatchdeltic.com
www.potlatchdeltic.com

PotlatchDeltic Land & Lumber LLC

Matt Puro

Procurement Forester

50518 County 45
Bemidji, MN 56601
Ph: (218) 759-4311
Cell/Ph2: (218) 766-1571
Fax: (218) 751-0425
matthew.puro@potlatchdeltic.com
www.potlatchdeltic.com

**Prairie Trailer****Joe Mitchell****President**

20 Industrial Blvd.
Morris, MN 56267
Ph: (320) 589-1771
Cell/Ph2: (715) 965-9436
Fax: (320) 589-1784
joe@ptrailer.com
www.ptrailer.com

R**Rainy Lake Oil****Larry Keep**

383 Hwy. 332 E
International Falls, MN 56649
Ph: (218) 283-4477
Cell/Ph2: (218) 244-7277
Fax: (218) 283-9601
larry.keep@rainylakeoil.com

RDO Vermeer LLC**Mark Rieckhoff**

1675 126th St. W
Burnsville, MN 55337
Ph: (952) 890-6144
Cell/Ph2: (612) 499-2147
Fax: (952) 882-2980
MRieckhoff@rdoequipment.com
www.RDOVermeer.com

RDO Vermeer LLC**Steve Rosenow**

1675 126th St. W
Burnsville, MN 55337
Ph: (952) 890-6144
Cell/Ph2: 612-499-2147
Fax: (952) 882-2980
srosenow@rdoequipment.com
www.RDOVermeer.com

Road Machinery & Supplies Co. (RMS)**Brad Carlson****Sales Manager**

P.O. Box 1248
315 N Hoover Rd.
Virginia, MN 55792
Ph: (218) 741-9011
Toll Free: (800) 752-4304
Fax: (218) 741-9465
bcarlson@rmseq.com
www.rmsequipment.com

S**Sappi Paper North America****Tom Cunningham****Procurement Forester**

20 N 22nd St.
Cloquet, MN 55720
Ph: (218) 591-3162
Cell/Ph2: (218) 879-2395
Fax: (218) 879-2375
tom.cunningham@sappi.com
www.sappi.com/cloquet-mill



2022 MLEP MEMBERSHIP DIRECTORY

Alphabetical Listing by Company Name

Sappi Paper North America

Patrick Galdonik

Procurement Forester

20 N 22nd St.

Cloquet, MN 55720

Ph: (218) 855-1030

Cell/Ph2: (218) 348-9883

Fax: (218) 855-1044

patrick.galdonik@sappi.com

www.sappi.com/cloquet-mill

Sappi Paper North America

Chris Martland

Sr. Wood Procurement Manager

20 N 22nd St.

Cloquet, MN 55720

Ph: (218) 591-0554

Cell/Ph2: (218) 879-2395

Fax: (218) 879-2375

chris.martland@sappi.com

www.sappi.com/cloquet-mill

Sappi Paper North America

Jack Kline

Procurement Forester

20 N 22nd St.

Cloquet, MN 55720

Ph: 218-221-4926

Cell/Ph2: (218) 879-2395

Fax: (218) 879-2375

jack.kline@sappi.com

www.sappi.com/cloquet-mill

Sappi Paper North America

Brett Peterson

Regional Wood Procurement Manager

20 N 22nd St.

Cloquet, MN 55720

Ph: (218) 879-2387

Cell/Ph2: (218) 390-5387

Fax: (218) 879-2375

brett.peterson@sappi.com

www.sappi.com/cloquet-mill

Sappi Paper North America

Ross Korpela

Sr. Wood Procurement Manager

20 N 22nd St.

Cloquet, MN 55720

Ph: (218) 879-2387

Cell/Ph2: (218) 591-0563

Fax: (218) 879-2375

ross.korpela@sappi.com

www.sappi.com/cloquet-mill

Sappi Paper North America

Damon Polus

Procurement Forester

20 N 22nd St.

Cloquet, MN 55720

Ph: (218) 591-3698

Cell/Ph2: (218) 879-2395

Fax: (218) 879-2375

damon.polus@sappi.com

www.sappi.com/cloquet-mill

**Sappi Paper North America****Eric Schram****Procurement Forester**

20 N 22nd St.

Cloquet, MN 55720

Ph: (218) 878-4233

Cell/Ph2: (218) 428-3840

Fax: (218) 879-2375

Eric.Schram@sappi.com

www.sappi.com/cloquet-mill

Sappi Paper North America**Corey Verdegan****Procurement Forester**

20 N 22nd St.

Cloquet, MN 55720

Ph: (218) 269-9192

Cell/Ph2: (218) 879-2395

Fax: (218) 879-2375

Corey.Verdegan@sappi.com

www.sappi.com/cloquet-mill

Sappi Paper North America**Patrick Wherley****Procurement Forester**

20 N 22nd St.

Cloquet, MN 55720

Ph: (218) 878-4356

Cell/Ph2: (218) 206-5396

Fax: (218) 879-2375

patrick.wherley@sappi.com

www.sappi.com/cloquet-mill

Savanna Pallets**Paul Agurkis****Timber Procurement Manager**

Box 308

41496 State Hwy. 65

McGregor, MN 55760

Ph: (218) 244-0379

Cell/Ph2: (218) 244-0379

paul@savannapallets.com

savannapallets.com

Savanna Pallets**Al Rauschel**

Box 308

41496 State Hwy. 65

McGregor, MN 55760

Ph: (218) 768-2077

Cell/Ph2: (218) 244-0379

alraushel@savannapallets.com

savannapallets.com

St. Louis County Land Dept. -**Land Commissioner's Office****Nate Anderson****Forester III**

Government Services Center

320 W 2nd St., Suite 302

Duluth, MN 55802

Ph: (218) 625-3700

Fax: (218) 625-3733

andersonn2@stlouiscountymn.gov

www.stlouiscountymn.gov



2022 MLEP MEMBERSHIP DIRECTORY

Alphabetical Listing by Company Name

St. Louis County Land Dept. -

Land Commissioner's Office

Kyle Andrews

Forester I

Virginia Office

7820 Hwy. 135

Virginia, MN 55792

Ph: (218) 742-9898

Fax: (218) 742-9870

andrewsk@stlouiscountymn.gov

www.stlouiscountymn.gov

St. Louis County Land Dept. -

Land Commissioner's Office

Erik Anton

Forester II

Pike Lake Office

5713 Old Miller Trunk Hwy.

Duluth, MN 55811

Ph: (218) 625-3700

Fax: (218) 625-3733

antone@stlouiscountymn.gov

www.stlouiscountymn.gov

St. Louis County Land Dept. -

Land Commissioner's Office

Robert Benson

Forester II

Pike Lake Office

5713 Old Miller Truck Hwy

Duluth, MN 55811

Ph: (218) 625-3700

Fax: (218) 625-3733

bensonr@stlouiscountymn.gov

www.stlouiscountymn.gov

St. Louis County Land Dept. -

Land Commissioner's Office

Josh Carlson

Forester I

Pike Lake Office

5713 Old Miller Trunk Hwy.

Duluth, MN 55811

Ph: (218) 625-3700

Fax: (218) 625-3733

carlsonj4@stlouiscountymn.gov

www.stlouiscountymn.gov

St. Louis County Land Dept. -

Land Commissioner's Office

Bill Hakala

Forester III

Government Services Center

320 W 2nd St., Suite 302

Duluth, MN 55802

Ph: (218) 726-2606

Fax: (218) 726-2600

hakalaw@stlouiscountymn.gov

www.stlouiscountymn.gov

St. Louis County Land Dept. -

Land Commissioner's Office

Troy Lindgren

Forester III

Pike Lake Office

5713 Old Miller Trunk Hwy

Duluth, MN 55811

Ph: (218) 625-3700

Fax: (218) 625-3733

liindgrent@stlouiscountymn.gov

www.stlouiscountymn.gov



**St. Louis County Land Dept. -
Land Commissioner's Office**

Chris Lintula

Forester II

Cook Office

9558 Ashawa Rd,

Cook, MN 55723

Ph: (218) 361-7916

Fax: (218) 666-6018

lintulac@stlouiscountymn.gov

www.stlouiscountymn.gov

**St. Louis County Land Dept. -
Land Commissioner's Office**

Julie Marinucci

**Land and Minerals Director/
Land Commissioner**

Government Services Center

320 W 2nd St., Suite 302

Duluth, MN 55802

Ph: (218) 742-9898

Fax: (218) 742-9870

marinucci@stlouiscountymn.gov

www.stlouiscountymn.gov

**St. Louis County Land Dept. -
Land Commissioner's Office**

Jason Meyer

Deputy Land & Minerals Director

Government Services Center

320 W 2nd St., Suite 302

Duluth, MN 55802

Ph: (218) 726-2606

Fax: (218) 726-2600

meyerj@stlouiscountymn.gov

www.stlouiscountymn.gov

**St. Louis County Land Dept. -
Land Commissioner's Office**

John Muhich

Forester II

Virginia Office

7820 Highway 135

Virginia, MN 55792

Ph: (218) 742-9870

Fax: (218) 742-9870

muhichj@stlouiscountymn.gov

www.stlouiscountymn.gov

**St. Louis County Land Dept. -
Land Commissioner's Office**

Brandon Pierzina

Forester I

Virginia Office

7820 Hwy. 135

Virginia, MN 55792

Ph: (218) 742-9898

Fax: (218) 742-9870

pierzina@stlouiscountymn.gov

www.stlouiscountymn.gov

**St. Louis County Land Dept. -
Land Commissioner's Office**

Dan Preiner

Forester Trainee

Pike Lake Office

5713 Old Miller Trunk Hwy.

Duluth, MN 55811

Ph: (218) 625-3700

Fax: (218) 625-3733

preinerd@stlouiscountymn.gov

www.stlouiscountymn.gov



2022 MLEP MEMBERSHIP DIRECTORY

Alphabetical Listing by Company Name

St. Louis County Land Dept. -

Land Commissioner's Office

Alex Richardson

Forester Trainee

Pike Lake Office

5713 Old Miller Trunk Hwy.

Duluth, MN 55811

Ph: (218) 625-3700

Fax: (218) 625-3733

richardsona@stlouiscountymn.gov

www.stlouiscountymn.gov

St. Louis County Land Dept. -

Land Commissioner's Office

Mike Stubbs

Forester III

Virginia Office

7820 Hwy. 135

Virginia, MN 55792

Ph: (218) 742-9898

Fax: (218) 742-9870

stubbsm@stlouiscountymn.gov

www.stlouiscountymn.gov

St. Louis County Land Dept. -

Land Commissioner's Office

Thomas Salzer

Forester II

Ely Office

35 N 3rd Ave. W

Ely, MN 55731

Ph: (218) 365-8230

Fax: (218) 365-8232

salzert@stlouiscountymn.gov

www.stlouiscountymn.gov

Staggemeyer Stave Co., Inc.

Jed Hammell

President

18318 State Hwy. 76

Caledonia, MN 55921

Ph: (612) 756-1620

Fax: (507) 724-3140

staggstave@qwestoffice.net

www.staggemeyerstave.com



800-934-LOGS (5647)

"Serving the Timber Industry since 1946"

**Stagemeyer Stave Co., Inc.****Robert Staggemeier****Log Buyer**

18318 State Hwy. 76
Caledonia, MN 55921
Ph: (507) 724-3395
Cell/Ph2: (608) 792-7598
Fax: (507) 724-3140
www.stagemeyerstave.com

T**Titan Machinery****Ryan Schall****Equipment Sales Consultant**

4311 Haines Rd.
Hermantown, MN 55811
Ph: (218) 727-3038
Cell/Ph2: (218) 213-5540
Toll Free: (800) 630-7170
Fax: (218) 727-2827
Ryan.Schall@titanmachinery.com
www.titanmachinery.com

W**Waldo Solutions, Inc.****Leland Huhta**

40709 Lower Pike Rd.
Chassell, MI 49916
Ph: (906) 231-3120
Fax: (906) 523-3507
leo@waldologs.com
www.waldologs.com

West Fraser**Jerry Richards****Wood Procurement Manager**

4409 Northwoods Rd. NW
Solway, MN 56678
Ph: (218) 751-2023
Cell/Ph2: (218) 556-0702
Fax: (218) 751-2075
jerry.richards@westfraser.com
www.westfraser.com/company/locations/bemidji

Z**Ziegler CAT****Chad Lau**

901 W 94th St.
Minneapolis, MN 55420
Ph: (612) 799-2618
chris.rice@zieglercat.com
www.zieglercat.com



2022 MLEP MEMBERSHIP DIRECTORY



KELLY, MICHELIN, FIRESTONE, BRIDGESTONE, YOKOHAMA, CORDOVAN, BANDAG

GENERAL CONTINENTAL

VIRGINIA

SUPERIOR, WI

Bus. (715) 398-0901

BRIAN SHAVER

201 N. Hoover Rd.

(800) 420-6216

bshaver@pompstire.com

Bus. (218) 741-5562

Fax (715) 398-0865

(800) 276-7161

Cell (218) 391-5040

Fax (218) 741-5907



Phone **888-525-3645**

Local **218-283-4477**

Fax **218-283-9601**

383 Highway 332 E

International Falls, MN 56649



PRAIRIE TRAILER
SPECIALIZING IN
WALKING FLOORS
MORRIS, MN

LARGE WALKING FLOOR TRAILER INVENTORY
INSTALLATION • PARTS • SERVICE & REPAIR

800-522-2560
www.ptrailer.com





CHOICE INSURANCE

Choice Insurance is the largest Independent Agency of wood / forest product companies in the region and one of the largest nationally.

Choice Insurance writes all lines of coverage for the following Industries: Sawmills and Planing Mills, Pallet and Truss Manufacturing, Cabinet, Door, Furniture, and Flooring manufacturing, Retail and Wholesale Building Material Distributors, and Logging Businesses.

For More information, contact Jay Eystad
at (218) 255-0446 or at j.eystad@insurewithchoice.com



The following Logging Businesses have completed program requirements necessary to achieve full membership status

County Listings

The following two letter codes indicate operation types.

CL Cut to Length

CV Conventional

HF Hand Felling

CP Chipper

GR Grinder

HL Horse Logging

Aitkin

LP16F998 **Arik Ladd Logging LLC**
CV 23930 Grouse St.
McGregor, MN 55760
Ph: (218) 821-9713
Ladd_Logging@yahoo.com

LP97F119 **Brekke, Dell**
CV HF 14954 480th St.
Tamarack, MN 55787
Ph: (218) 392-0367
dellbrekke2017@gmail.com

LP97F120 **DeMenge Trucking &
Forest Products LLC**
26205 State Hwy. 210
McGregor, MN 55760
Ph: (218) 768-4900
Cell/Ph2: (218) 820-8129
Fax: (218) 768-4187
jrdemenge@gmail.com

LP19F1027 **Fredrickson, Derek**
CV P.O. Box 103
McGregor, MN 55760
Ph: (218) 341-8856
dfredrickson88@gmail.com

LP13F910 **Haapoja, George L.**
CV CL P.O. Box 231
45621 State Hwy. 65
McGregor, MN 55760
Ph: (218) 820-5412
h.george@gmail.com

LP11F840 **John Benson Excavating
& Logging**
CV HF 27643 Partridge Ave.
Aitkin, MN 56431
Ph: (218) 821-8719
Cell/Ph2: (218) 821-8719
Fax: (218) 678-3572
johnbensonexcavating@
yahoo.com

LP13F930 **K & M Logging**
CL 31936 State Hwy. 65
McGregor, MN 55760
Ph: (218) 839-7503
wayrynenk@gmail.com

LP98F290 **Mark Demenge Timber
Products**
CV HF 41357 230th Ave.
McGregor, MN 55760
Ph: (218) 355-8358
lmarklog@gmail.com



2022 MLEP MEMBERSHIP DIRECTORY

Alphabetical Listing by County

LP97F106 **Marty Johnson Logging**
CV HF 10298 480th St.
Tamarack, MN 55787
Ph: (218) 357-3910
Cell/Ph2: (218) 839-7731
martyjlogging@yahoo.com

LP18F1005 **Myers, Alan**
HF 67715 380th Ave.
Hill City, MN 55748
Ph: (218) 392-0448

LP21F1094 **Pisarek, John A.**
CV 35108 320th St.
Aitkin, MN 56431
Ph: (218) 839-7803
john.pisarek@gmail.com

LP03F613 **Reibel Logging, Inc.**
CV 29689 438th Ln.
Palisade, MN 56469
Ph: (218) 244-8917
Cell/Ph2: (218) 244-8917

LP05F653 **Rice River Logging**
CV HF 21293 Dam Lake St.
McGregor, MN 55760
Ph: (218) 768-3083
Cell/Ph2: (218) 380-6155
pghlar@frontiernet.net

LP97F086 **Simcoe & Habisch Logging**
CL 23693 Kestrel Ave.
McGrath, MN 56350
Ph: (218) 658-4609
carol23693@frontiernet.net

LP19F1052 **Timber Transport, Inc.**
CL 20982 State Hwy. 210
McGregor, MN 55760
Ph: (218) 820-8555
Fax: (218) 768-2264
curt@raveilltrucking.com

LP16F970 **Tveit Logging & Lumber**
CV 27654 480th St.
Palisade, MN 56469
Ph: (218) 838-0014
joetveit@yahoo.com

Anoka

Provisional **Northern Timber**
1158 7115 237th Ave. NE
CV HF Stacy, MN 55079
Ph: (651) 462-6076
Cell/Ph2: (651) 332-3336
woodgoods@frontiernet.net

Becker

LP19F1049 **Crowell Logging**
CV 38433 County Highway 35
Waubun, MN 56589
Ph: (218) 255-4512
cliff.crowell@outlook.com

WD13F929 **Joe Torgerson Timbers LLC**
CV CL HF 14289 County Road 119
Menagha, MN 56464
Ph: (218) 564-5664
Cell/Ph2: (218) 255-3312
Fax: (218) 564-6125
jtorgeron724@outlook.com



LP97F122 **Kimball's Logging, Inc.**
CV 24516 Brill Ave.
Park Rapids, MN 56470
Ph: (218) 573-3454
Cell/Ph2: (218) 849-5222
Fax: (218) 573-2295
kimlogs@arvig.net

Provisional **Matthees Tree Care LLC**
1148 17926 Meadow Circle
CV HF Audubon, MN 56511
Ph: (701) 212-2433
mattheestrecare@gmail.com

LP08F715 **Skaro Logging**
56469 170th St.
Menahga, MN 56464
Ph: (218) 564-5849
Cell/Ph2: (218) 820-9324
beckie9@gmail.com

Provisional **Straight River Forestry**
1154 25627 County Hwy. 48
CV Osage, MN 56570
Ph: (218) 252-0403
shawnmay09@yahoo.com

Beltrami

LP02F561 **Affield Logging**
CV 32699 Everts Rd. NE
Blackduck, MN 56630
Ph: (218) 766-8978
Cell/Ph2: (218) 243-2539
bonnieaffield@ymail.com

LP08F727 **Andree Logging**
7507 Fairgrounds Rd. NW
Bemidji, MN 56601
Ph: (218) 766-7895
Cell/Ph2: (218) 751-6903

LP21F1118 **Bart Johnson &
Ed Gehlert Logging**
CV 21521 Buckeye Rd. NE
Blackduck, MN 56630
Ph: (218) 766-4909 Bart
Cell/Ph2: (218) 766-6255 Ed
bartj3659@gmail.com

WD97F214 **Benson Timber Company**
22383 Nebish Rd. NE
Blackduck, MN 56630
Ph: (218) 835-4525
Fax: (218) 835-4526
kbenson@paulbunyan.net

LP19F1057 **Big H Logging**
CV CL 28892 Fire Tower Rd. NE
Blackduck, MN 56630
Ph: (218) 243-2413
Cell/Ph2: (218) 766-2750
Fax: (218) 243-3483
bigoddie@paulbunyan.net

LP05F629 **Binkley Logging**
CV 4530 Nebish Rd. NE
Tenstrike, MN 56683
Ph: (218) 243-2564
Cell/Ph2: (218) 766-1431
binkley@paulbunyan.net



2022 MLEP MEMBERSHIP DIRECTORY

Alphabetical Listing by County

- LP22F1121 **Boreen Harvesting**
CL 72158 County Rd. 13
Blackduck, MN 56630
Ph: (218) 368-4275
Cell/Ph2: (218) 835-4225
boreenharvesting@gmail.com
- LP97F016 **Brower-Stomberg Logging**
CV 39813 Log Ln. NE
Kelliher, MN 56650
Ph: (218) 766-1472
gbrower@paulbunyan.net
- LP22F1124 **Challenger Logging**
CV 1176 Swenson Rd. NE
Bemidji, MN 56601
Ph: (218) 368-1920
dudleys@paulbunyan.net
- LP97F202 **Dukek Logging, Inc.**
CV CL 23873 Timber Trail Dr.
Bemidji, MN 56601
Ph: (218) 556-8153
dukek21@yahoo.com
- LP08F746 **Eichstadt Logging**
2010 Van Buren Ave. SE
Bemidji, MN 56601
Ph: (218) 751-1984
- LP97F025 **Foss Logging**
CV CL 74379 Powderhorn Rd. NW
Grygla, MN 56727
Ph: (218) 294-6233
Cell/Ph2: (218) 689-6584
- LP97F027 **Frenzel Logging, Inc.**
CV 37471 Willow Creek Rd. NE
Kelliher, MN 56650
Ph: (218) 647-8834
Cell/Ph2: (218) 647-8651
Fax: (218) 647-8834 call first
frenzellogging@gmail.com
- LP22F1129 **Gilbertson, John M.**
CV 9013 Albers Rd. NW
Puposky, MN 56667
Ph: (218) 556-1675
jgfeed90@gmail.com
- LP00F433 **Haugan Farm & Log**
21566 Haugan Dr.
Pinewood, MN 56664
Ph: (218) 243-3094
- LP08F735 **J & N Logging**
CL 12891 Bemidji Rd. NE
Bemidji, MN 56601
Ph: (218) 555-3567
Cell/Ph2: (218) 556-8591
nascar@paulbunyan.net
- LP16F965 **Jason's Logging & Bobcat Service Inc.**
CV CL 12614 Bemidji Rd. NE
Bemidji, MN 56601
Ph: (218) 368-7020
catiev@paulbunyan.net
- LP97F045 **Joy Logging**
8429 Bemidji Rd. NE
Bemidji, MN 56601
Ph: (218) 751-2810
gjoy@paulbunyan.net



- LP07F690 **Kevin Thomas Logging**
CV 17838 Popplewood Rd. NE
Hines, MN 56647
Ph: (218) 835-8179
Cell/Ph2: (218) 766-7178
jody.thomas@mail.com
- LP01F490 **Krueth Logging, Inc.**
CV CL 20122 New Maple Ridge NE
Hines, MN 56647
Ph: (218) 368-6869
briankrueth@gmail.com
- LP97F060 **Lundberg Forest Products, Inc.**
CV 3835 Centerline Rd. NW
Solway, MN 56678
Ph: (218) 467-3300
Cell/Ph2: (218) 766-9883
- LP08F719 **Lyseng Logging, Inc.**
CV 13804 Kelm Rd. NW
Bemidji, MN 56601
Ph: (218) 444-7083
Cell/Ph2: (218) 766-5805
lysenglogging@gmail.com
- LP15F959 **M&M Logging & Son, Inc.**
CL 73552 County Rd. 13
Blackduck, MN 56630
Ph: (218) 835-7763
Cell/Ph2: (218) 368-4681
mmloggingson@gmail.com
- LP22F1132 **Mike Thomas Logging**
CV 7660 Memorial Ln. NW
Bemidji, MN 56601
Ph: (218) 766-1179
sat83@yahoo.com
- LP09F776 **Mistic Logging**
CV 27803 Irvine Ave. NE
Puposky, MN 56667
Ph: (218) 243-2607
- LP00F397 **MRJ Logging**
HF 12921 Centerline Rd. NW
Pinewood, MN 56676
Ph: (218) 243-2843
Cell/Ph2: (218) 766-8584
Fax: (218) 243-2843
- LP97F165 **Northern Logging, Inc.**
CV 18311 Hwy. 2 NW
Solway, MN 56678
Ph: (218) 556-3684
markrb3305@gmail.com
- LP97F156 **Northland Timber Co./
Don Gross & Sons**
CV Box 247
Blackduck, MN 56630
Ph: (218) 835-6688
- LP98F329 **Owen & Wentworth Logging**
CV 20908 Hines Rd. NE
Hines, MN 56647
Ph: (218) 556-9363
Cell/Ph2: (218) 556-4363
- LP22F1137 **Owen Timber LLC**
CV 17323 Ricepond Rd. NE
Hines, MN 56647
Ph: (218) 835-5732
Cell/Ph2: (218) -766-0803
kaowen@paulbunyan.net



2022 MLEP MEMBERSHIP DIRECTORY

Alphabetical Listing by County

LP21F1095 **Paulson Logging**
CV 3440 Adelia Dr. SE
Bemidji, MN 56601
Ph: (218) 556-7176
Cell/Ph2: (218) 556-7176
mpaulson1119@gmail.com

LP07F680 **Peck, Wesley E.**
13440 Warner Rd. NW
Bemidji, MN 56601
Ph: (218) 243-2855
wepeck@paulbunyan.net

LP07F678 **Pink Logging**
CV 33686 Neumann Rd. NE
Northome, MN 56661
Ph: (218) 360-3553
mpink@paulbunyan.net

Provisional **Rick's Forest Products, Inc.**
1150 49361 US Hwy. 71
CV Bemidji, MN 56601
Ph: (218) 333-8888
Cell/Ph2: (218) 766-1798
Fax: (218) 759-1030
kyleschulke@gmail.com

LP02F551 **Smischney Logging**
CV 37724 Willow Creek Rd.
Kelliher, MN 56650
Ph: (218) 647-8366
Cell/Ph2: (218) 766-9842

LP21F1088 **Teigland Inc.**
CV P.O. Box 986
Red Lake, MN 56671
Ph: (218) 785-3011
gart82@icloud.com

LP18F1026 **Trimble Logging**
CV 9758 Trimble Ct. NE
Tenstrike, MN 56683
Ph: (218) 368-6216
Cell/Ph2: (218) 566-6478
rockyou27@yahoo.com

Provisional **Wickham Logging**
1149 17157 Battle River Rd. NE
CV Kelliher, MN 56650
Ph: (218) 647-8653
Cell/Ph2: (218) 766-4757
Fax: (218) 647-8653
lynnettewickham@yahoo.com

LP22F1143 **Wood Chucks Tree Service
& Logging**
CL 696 Schroeder Rd. NW
Bemidji, MN 56601
Ph: (218) 556-1453

Blue Earth

LP22F1135 **Northern Hardwood &
Marketing Co Inc**
HF 224 Woodshire Dr.
Mankato, MN 56001
Ph: (507) 381-0277
tdrumm2@gmail.com

Carlton

LP19F1026 **Agurkis Logging**
CV 196 Lakeshore Drive
Moose Lake, MN 55767
Ph: (218) 380-1708



- LP97F118 **Aho Forest Products**
CV 2674 S Finn Rd.
Kettle River, MN 55757
Ph: (218) 273-4593
gerrya@hotmail.com
- LP22F1126 **David J. Aho Forest Products**
CV 2610 S Finn Rd.
Kettle River, MN 55757
Ph: (218) 380-1585
dareyaho71@gmail.com
- LP98F350 **Heikkila Forest Products**
CL CP 2210 County Rd. 61
Carlton, MN 55718
Ph: (218) 348-6806
Cell/Ph2: (218) 348-6806
jandjheikkila@gmail.com
- LP97F149 **J & A Logging, Inc.**
CV 6737 Pacific Ave.
Wright, MN 55798
Ph: (218) 428-8289
janaferguson@yahoo.com
- LP09F753 **Krueger Dirtwerx, Inc.**
CV CP 2962 County Rd. 61
Mahtowa, MN 55707
Ph: (218) 390-6477
Cell/Ph2: (218) 348-8971
kdwforestry@gmail.com
- LP97F229 **Leino Logging**
CV 3809 Gilbert Rd.
Barnum, MN 55707
Ph: (218) 389-6169
jodyw4444@aol.com
- LP97F059 **Lund Logging**
CV HF 1350 Middle Rd.
Cromwell, MN 55726
Ph: (218) 565-0502 (Rodney)
Cell/Ph2: (218) 565-1263
(Russell)
lalund62@yahoo.com
- LP21F1086 **Palmer Logging**
CV CL P.O. Box 226
HF CP Barnum, MN 55707
Ph: (218) 389-6189
Cell/Ph2: (218) 380-3932
Fax: (218) 389-9857
jlpdmp02@gmail.com
- LP97F199 **Peura Contracting, Inc.**
CV 3325 County Rd. 131
Kettle River, MN 55757
Ph: (218) 380-3645
- LP12F901 **Reed, Daniel W.**
CV 6999 Reed Ln.
Kettle River, MN 55757
Ph: (218) 273-6103
reed.dan1949@gmail.com
- LP02F538 **Salmela Logging**
CV CL CP 1785 White Cloud Dr. N
Isle, MN 56342
Ph: (218) 340-6801
www.salmelalogging.com
salmelalogging@gmail.com



2022 MLEP MEMBERSHIP DIRECTORY

Alphabetical Listing by County

LP16F997 **Schatz Logging**
CV HF 4525 W County 134
Moose Lake, MN 55767
Ph: (218) 380-8855
Cell/Ph2: (218) 485-4860

LP12F880 **Suhonen, Roger C.**
CV HF 1472 W Island Lake Rd.
Cromwell, MN 55726
Ph: (218) 348-5379

LP17F994 **Timonen Forest Products, LLC**
CV CL 2944 County Rd. 139
Barnum, MN 55707
Ph: (218) 380-1887
timonenfp@gmail.com

LP19F1061 **Tony C. Aho Trucking &
Forest Products**
CV 5440 Mowers Rd.
Cromwell, MN 55726
Ph: (218) 380-9048
emowersaho@hotmail.com

Cass

LP97F022 **Enberg Logging**
CV CP P.O. Box 186
11785 State Hwy. 64 SW
Motley, MN 56466
Ph: (218) 352-6175
Cell/Ph2: (218) 820-7546
Fax: (218) 352-6432
renberg2@brainerd.net

LP21F110 **Gregerson Logging**
CV 7159 Little Wolf Rd. NW
Cass Lake, MN 56633
Ph: (218) 335-2138
Cell/Ph2: (218) 820-9563
littlewolfresort@gmail.com

LP18F1025 **L. D. Kuschel, Inc.**
CV 4001 92nd Ave. SW
Sebeka, MN 56477
Ph: (218) 639-4226
Fax: (218) 472.3402
LDKuschel@gmail.com

LP21F1104 **Lester Parker Logging**
CV 7112 37th Ave. SW
Pequot Lakes, MN 56472
Ph: (218) 568-2464
Cell/Ph2: (218) 820-4712
lesjulparker@yahoo.com

LP97F124 **M & S Logging, LLC**
CV P.O. Box 106
Backus, MN 56435
Ph: (218) 838-8402
Cell/Ph2: (218) 838-8402
mslogging@tds.net

LP11F853 **Pillsbury Forest
Hardwoods, Inc.**
11063 Richmond Rd. SW
Pillager, MN 56473
Ph: (218) 746-4004
Cell/Ph2: (218) 839-0734
pillsburyforesth hardwoods@
brainerd.net



LP98F334 **Richards Brothers, Inc.**
CV 1262 State 64 SW
Backus, MN 56435
Ph: (218) 947-4754
Cell/Ph2: (218) 587-4467
Fax: (218) 587-2313

LP09F794 **Sawyer Enterprises, LLC**
CV CL 317 Front St.
Backus, MN 56435
Ph: (218) 838-7000
Cell/Ph2: (218) 838-7000

LP97F236 **Sawyer Timber Company, LLP**
CV P.O. Box 13
Backus, MN 56435
Ph: (218) 947-4032
Cell/Ph2: (218) 232-0350
Fax: (218) 947-4041
renerae6@gmail.com

LP00F460 **Stangler Logging LLC**
CL 7287 124th St. NE
Deer River, MN 56636
Ph: (218) 244-4181
kerspauly@gmail.com

LP18F1022 **Stangler Trucking LLC**
CL 12476 72nd Ave. NE
Deer River, MN 56636
Ph: (218) 259-7907
lstangler2833@gmail.com

LP22F1140 **Tyler's Backhoe Service**
CL P.O. Box 454
Walker, MN 56484
Ph: (218) 820-4588
Cell/Ph2: (218) 820-4588
tylercrow@arvig.net

Clearwater

LP21F1109 **Erickson Logging LLC**
CV HF 38322 141st Ave.
Bagley, MN 56621
Ph: (218) 694-6956
Cell/Ph2: (2189) 766-5982
djbb99@gvtel.com

LP02F571 **Fultz Logging LLC**
CV HF 17202 Mosquito Creek Rd.
Bagley, MN 56621
Ph: (218) 766-5450
Fax: (218) 657-2361
bwfultz@gvtel.com

LP02F525 **Gerbracht Logging, Inc.**
CL 20405 340th St.
Bagley, MN 56621
Ph: (218) 694-2132
Cell/Ph2: (218) 766-2770
Fax: (218) 694-2014
david.gerbracht@gmail.com

LP02F567 **Halberg Logging**
22605 County 2
Shevlin, MN 56676
Ph: (218) 657-2788
Cell/Ph2: (218) 657-2289
halbergdan@yahoo.com

LP22F1159 **Hillside Lumber, Inc.**
CV P.O. Box 357
20250 Upper Rice Lake Rd.
Bagley, MN 56621
Ph: (218) 694-6562
Cell/Ph2: (218) 766-6683
Fax: (218) 694-2964
hillside@gvtel.com



2022 MLEP MEMBERSHIP DIRECTORY

Alphabetical Listing by County

- LP10F832 **Lang, Arthur R.**
CV 12736 State 200
Mahnomen, MN 56557
Ph: (218) 935-2969
- LP03F573 **Olson Logging**
P.O. Box 33
Bagley, MN 56621
Ph: 218-556-6280
- LP22P1144 **Steve Stai Gravel & Landscaping Inc.**
CV 40968 211th Ave.
Bagley, MN 56621
Ph: (218) 308-1234
Cell/Ph2: (218) 308-1234
stevenwstai19@gmail.com
- LP22F1146 **Hofer, Michael J.**
HF 660 County Rd. 60
Grand Marais, MN 55604
Ph: (952) 994-0726
Cell/Ph2: (763) 226-1828
hoaf@boreal.org
- LP10F848 **Johnson Brothers Firewood, LLC**
CV CL P.O. Box 41
Hovland, MN 55606
Ph: (218) 370-2523
- LP02F511 **K. Anderson Logging**
CV CL HF 984 Cut Off Rd.
Grand Marais, MN 55604
Ph: (218) 370-8918
andersonlogging@live.com

Cook

- LP12F1020 **Bloomquist Construction**
CV 250 Bloomquist Mtn. Rd.
Grand Marais, MN 55604
Ph: (218) 387-2146
Cell/Ph2: (218) 370-0266
bloomquistconstruction@hotmail.com

- LP21F1106 **Circle H Timber**
CL 1605 E Hwy 61
Grand Marais, MN 55604
Ph: (218) 387-2396

- LP09F805 **Hall Logging**
CV CL 280 Hall Rd.
Lutsen, MN 55612
Ph: (336) 480-7385
peterhall619@gmail.com

Crow Wing

- LP97F137 **Banick Logging, Inc.**
CV CP 19268 County Rd. 3
Brainerd, MN 56401
Ph: (218) 820-4318 shop
Cell/Ph2: (218) 820-5803
banicklogging@brainerd.net

- LP21F1103 **Fenstermaker Trucking & Logging**
CL 5280 County Rd. 16
Pequot Lakes, MN 56472
Ph: (218) 821-7736
alflogging@yahoo.com



LP05F655 **Fletcher Trucking, Inc.**
CV CP 10545 Business 371
Brainerd, MN 56401
Ph: (218) 825-8824
Cell/Ph2: (218) 839-4652
Fax: (218) 825-3715
www.fletchertruckinginc.com
fletchertrucking@brainerd.net

LP17F984 **Minnesota Timber, LLC**
CV CL P.O. Box 315
12209 State Hwy. 18
Brainerd, MN 56401
Ph: (218) 828-4636
Cell/Ph2: (218) 820-4694
Fax: (218) 824-1510
adechantal@gmail.com

LP12F890 **Smude Logging**
CV 7921 County Rd. 8
Brainerd, MN 56401
Ph: (218) 764-2283
Fax: (218) 764-2250
smudebill@yahoo.com

Fillmore

Provisional **Meighen Forest Products**
1147 18590 Orion Rd.
CV HF HL Spring Valley, MN 55975
Ph: (507) 259-8000
Cell/Ph2: (507) 259-8000
meighenforestproducts@
gmail.com

Goodhue

LP97F006 **Johnson Logging, Inc.**
HF 7557 360th St. Way
Cannon Falls, MN 55009
Ph: (507) 263-5711
Cell/Ph2: (651) 463-9495
jlogging@msn.com

Houston

LP19F1056 **Konkel Forest Products**
HF P.O. Box 159; 655 Main St.
New Albin, IA 52160
Ph: (563) 544-4600
Cell/Ph2: (563) 419-3051
Fax: (563) 544-4980
kfp@acegroup.cc

LP20F1071 **Ron Holte Logging**
CV HF 18715 Holm Dr.
Spring Grove, MN 55974
Ph: (507) 450-9867
ronnieholte.rh@gmail.com

Hubbard

LP15F957 **Bratlien, Ervin**
CV 46104 US 71
Laporte, MN 56461
Ph: (218) 556-0519
Cell/Ph2: (218) 224-2197
timbocutter@gmail.com

LP22F1123 **C & M Walsh Logging, Inc.**
CL 614 Malm St. E
Park Rapids, MN 56470
Ph: (218) 732-5782
Cell/Ph2: (218) 252-5782
Fax: (218) 732-5782
mswalsh@unitelc.com



2022 MLEP MEMBERSHIP DIRECTORY

Alphabetical Listing by County

LP97F001 **Dick Walsh Forest Products**

CV CL CP 12873 County 32
Park Rapids, MN 56470
Ph: (218) 732-4154
Cell/Ph2: (218) 732-5665
Fax: (218) 732-8594
walshforestprod@
qwestoffice.net

LP97F108 **Hadrava Timber Company,
Inc.**

CL 42348 US 71
Laporte, MN 56461
Ph: (218) 224-2729
Cell/Ph2: (218) 820-9149
bhadrava@paulbunyan.net

LP21F1115 **Hooker Logging Inc.**

CV 40109 County 3
Laporte, MN 56461
Ph: (218) 266-3982
Cell/Ph2: (218) 255-1724
Fax: 218-699-3450

LP08F761 **Lawyer, Mark A.**

CV 23326 County Rd. 9
Bemidji, MN 56601
Ph: (218) 556-7651
Cell/Ph2: (218) 333-0997

LP22F1131 **Leo's Firewood Services LLC**

CV HF 21570 County 44
Laporte, MN 56461
Ph: (218) 556-8960
leosfirewood@gmail.com

LP08F694 **Mullin Logging**

CV 15944 County 9
Becida, MN 56678
Ph: (218) 854-7339
bcmullin@paulbunyan.net

LP98F301 **R. H. Forest Management**

CV 42740 US 71
Laporte, MN 56461
Ph: (218) 820-8919
rhforestmgmt@gmail.com

LP02F553 **Ron Weiss Logging, Inc.**

CL 10162 County 41
Park Rapids, MN 56470
Ph: (218) 732-5007
Cell/Ph2: (218) 252-9180
Fax: (218) 732-5007
weissbunch@aol.com

LP97F200 **White Bros. Logging**

CV CL HF 21730 County 44
Laporte, MN 56461
Ph: (218) 224-2262
Cell/Ph2: (218) 820-8262
swhite@paulbunyan.net

Itasca

LP97F172 **Andy Michalek Logging, Inc.**

CV 54529 Michalek Rd.
Blackduck, MN 56630
Ph: (218) 659-4572
Cell/Ph2: (218) 556-2109
Fax: (218) 659-4320



- LP97F155 **Donald W. Nelson**
CL **Logging, Inc.**
68922 County Rd. 547
Cook, MN 55723
Ph: (218) 376-4638
Cell/Ph2: (218) 969-3402
dwnlogging@gmail.com
- LP97F112 **Filipiak Logging, LLC**
CL 32869 LaPlant Rd.
Grand Rapids, MN 55744
Ph: (218) 327-1870
Cell/Ph2: (218) 259-0028
ts.flip@mchsi.com
- LP09F768 **Forseen Logging LLC**
CL 64055 County Rd. 26
Northome, MN 56661
Ph: (218) 766-4378
Cell/Ph2: (218) 659-4439
jforseen73@outlook.com
- LP21F1099 **Greg Cook Logging, Inc.**
CV CL 35367 County Rd. 237
Bigfork, MN 56628
Ph: (218) 743-3947
Cell/Ph2: (218) 244-8201
Fax: (218) 743-1947
gcooklogging@gmail.com
- LP17F996 **Integrity Logging**
CL 12 Roosevelt St.
Bovey, MN 55709
Ph: (218) 259-1776
Cell/Ph2: (218) 259-1776
zachrahier@hotmail.com
- LP97F225 **Jobe, Daryl J.**
HF 28577 Norberg Dr.
Grand Rapids, MN 55744
Ph: (218) 244-5299
- LP98F351 **Jobe, Peter N.**
HF 20778 Wendigo Park Rd.
Grand Rapids, MN 55744
Ph: (218) 244-5166
- LP07F671 **Larson, Daryn J.**
CV 39506 County Road 225
Bigfork, MN 56628
Ph: UNPUBLISHED
- LP97F263 **Lovdahl & Sons LLC**
CV CP 35093 County Rd. 40
Effie, MN 56639
Ph: (218) 244-5135
- LP15F962 **McCarroll Timber Harvesting**
CL 49286 County Rd. 334
Bigfork, MN 56628
Ph: (218) 256-4784
Cell/Ph2: (218) 245-1759
mcdaboo@hotmail.com
- Provisional **Mentges Logging**
1156 31119 Co. Rd. 139
CV Deer River, MN 56636
Ph: (218) 246-8069
Cell/Ph2: (218) 259-8789
mentgeslogging@gmail.com



2022 MLEP MEMBERSHIP DIRECTORY

Alphabetical Listing by County

- LP05F645 **Nelson Wood Products of**
CL **Togo, Inc.**
68588 Danyluk Rd.
Togo, MN 55723
Ph: (218) 376-4438
Cell/Ph2: (218) 969-2300
oddlogs@yahoo.com
- LP21F1097 **Newberg Forest Products,**
CV **Inc.**
35359 State Hwy. 6
Deer River, MN 56636
Ph: (218) 246-9896
Cell/Ph2: (218) 244-4435
jwnewberg@gmail.com
- LP97F160 **Northern Forest & Wildlife**
CV CL HF **Manager**
130 Par Ln.
Grand Rapids, MN 55744
Ph: (218) 244-1349
tkromy@paulbunyan.net
- LP16F963 **Northwoods Excavating**
CV **Services, Inc.**
41086 Scenic Hwy.
Bovey, MN 55709
Ph: (218) 245-3659
Cell/Ph2: (218) 259-4306
northwoods@live.com
- LP00F393 **Northwoods Timber**
CL **Harvesting, Inc.**
12992 County Rd. 55
Nashwauk, MN 55769
Ph: (218) 969-5270
john.northwoodstimmer.
riipinen@gmail.com
- LP97F132 **Nylund Logging**
CV
P.O. Box 154
Marcell, MN 56657
Ph: (218) 832-3631
Cell/Ph2: (218) 259-9147
Fax: (218) 832-3631
- LP12F907 **Padgett Logging**
CV
68914 County Rd. 13
Blackduck, MN 56630
Ph: (218) 244-6376
Cell/Ph2: (218) 835-8894
padgettlogging@yahoo.com
- LP97F002 **Pittack Logging, Inc.**
CL
748 County Rd. 440
Bovey, MN 55709
Ph: (218) 245-1768
Cell/Ph2: (218) 259-8148
Fax: (218) 245-2901
pittacks@paulbunyan.net
- LP97F158 **R.T. Beckman Logging LLC**
CL
27606 Splithand Rd.
Grand Rapids, MN 55744
Ph: (218) 256-1722
beckmantruckingllc@
gmail.com
- LP08F747 **Randy Erickson Logging**
CL
45782 State Hwy. 6
Deer River, MN 56636
Ph: (218) 832-3805
Cell/Ph2: (218) 398-7578



LP12F885 **Rieger Logging, Inc.**
CV CL HF 61559 County Rd. 26
Northome, MN 56661
Ph: (218) 659-4359
Cell/Ph2: (218) 244-8572
Fax: (218) 659-4560
mrieger@paulbunyan.net

LP97F084 **Scheff Logging & Trucking, Inc.**
CV CL 48985 State Hwy. 38
Marcell, MN 56657
Ph: (218) 832-6500
Fax: (218) 832-6501
schefflogging@arvig.net

LP17F991 **Schultz Logging**
HF 46023 State Hwy. 6
Deer River, MN 56636
Ph: (218) 832-3360
Cell/Ph2: (218) 832-3360
Fax: (218) 832-3123
schultz6@bigfork.net

LP18F1016 **Treat Timber LLC**
CL 1509 NE 7th St.
Grand Rapids, MN 55744
Ph: (218) 244-0770
Cell/Ph2: (218) 244-0770
davtreat@gmail.com

LP97F210 **Trout Enterprises, Inc.**
CV CL HF P.O. Box 236
Deer River, MN 56636
Ph: (218) 246-8165
Cell/Ph2: (218) 244-7190
Fax: (218) 246-2086
dctrout@paulbunyan.net

LP22F1142 **Wabana Clearing & Excavating LLC**
35706 Little Wabana Road
Grand Rapids, MN 55744
Ph: (218) 256-2548
k.wagner3096@gmail.com

LP02F547 **Waldron Trucking & Logging**
CV HF 30882 County Rd. 525
Effie, MN 56639
Ph: (218) 743-3023
spinnermargie@gmail.com

LP20F1073 **Warner Contracting**
HF 47186 County Rd. 37
Deer River, MN 56636
Ph: (218) 929-8060
Cell/Ph2: (218)
warneraustin1973@gmail.com

Kanabec

LP22F1125 **Construction Grade, Inc.**
CV CL HF 1722 Liberty Street
Mora, MN 55051
Ph: (320) 362-4597
chrismahl@gmail.com

Koochiching

LP97F153 **B & H Logging LLC**
CV 5300 County Rd. 29
Ray, MN 56669
Ph: (218) 240-4740
fshany@aol.com

LP97F252 **DeLack Logging, Inc.**
CV CL P.O. Box 354
Littlefork, MN 56653
Ph: (218) 244-3018
delack@frontiernet.net



2022 MLEP MEMBERSHIP DIRECTORY

Alphabetical Listing by County

- LP97F123 **Dobbs Logging, Inc.**
CV 5401 County Rd. 77
Littlefork, MN 56653
Ph: (218) 278-4244
Cell/Ph2: (218) 244-2678
thedobbs@frontiernet.net
- LP98F349 **Doucette Logging Inc.**
CV 707 Memorial Dr.
International Falls, MN 56649
Ph: (218) 324-2046
osco1975@yahoo.com
- LP97F167 **Erickson Timber Products, Inc.**
CV CL 1801 State Hwy. 72 SE
Baudette, MN 56623
Ph: (218) 634-2599
Cell/Ph2: (218) 556-1868
Fax: (218) 634-1822
ericksontimber@wiktel.com
- LP97F091 **H & S Logging**
CV 5761 County Rd. 1
Littlefork, MN 56653
Ph: (218) 244-7183
Cell/Ph2: (218) 244-9726
Fax: (218) 278-4364
wcsswenson@gmail.com
- LP97F034 **Hasbargen Logging, Inc.**
CV 1580 Town Rd. 117
Birchdale, MN 56623
Ph: (218) 634-1628
Cell/Ph2: (218) 244-2152
robyn027@centurytel.net
- LP18F1008 **Hege Logging, LLP**
CV CL 4440 Hwy. 71
Littlefork, MN 56653
Ph: (218) 278-4294
Fax: (218) 278-4294
samhege@gmail.com
- LP97F040 **Imhof Logging**
CV 5859 County Rd. 8
Littlefork, MN 56653
Ph: (218) 417-0880
Cell/Ph2: (218) 417-0833
imhofs@frontiernet.net
- LP97F046 **Junker Logging Inc.**
CV 5564 County Rd. 8
Littlefork, MN 56653
Ph: (218) 278-4569
Cell/Ph2: (218) 244-1803
junkerlog@frontiernet.net
- LP07F693 **Kennedy Logging, Inc.**
CV 4370 Co. Rd. 90E
International Falls, MN 56649
Ph: (218) 244-5053
Cell/Ph2: (218) 283-4985
- LP97F050 **Killmer Brothers, Inc.**
CV P.O. Box 323
1212 Hwy. 6
Big Falls, MN 56627
Ph: (218) 276-2233
Cell/Ph2: (218) 556-0160
dkillmer123@outlook.com



- LP21F1084 **L & L Constructors, Inc.**
CV 4471 Hwy. 11
International Falls, MN 56649
Ph: (218) 290-7485
Cell/Ph2: (218) 290-7485
kirk.lindberg@llconstructors.com
- LP18F1012 **Little Logging**
CV P.O. Box 502
5049 Industrial Ave.
Littlefork, MN 56653
Ph: (218) 278-6758
Cell/Ph2: (218) 244-6331
- LP21F1096 **Mai-Best Logging, Inc.**
CV 8464 Hwy. 11
Baudette, MN 56623
Ph: (218) 280-0669
Cell/Ph2: (218) 244-0434
maibestlogging2019@gmail.com
- LP01F469 **Mike Gates Logging LLC**
CV P.O. Box 413
Big Falls, MN 56627
Ph: (218) 368-0623
mcgates@citlink.net
- LP97F070 **Nelson Brothers Logging**
CV 911 4th St. NW
P.O. Box 437
Big Falls, MN 56627
Ph: (218) 324-2017
- LP97F061 **Northwoods Chipping, Inc.**
CV 3370 County Rd. 108
International Falls, MN 56649
Ph: (218) 283-7981
northwoodsipping@yahoo.com
- LP97F076 **Pelland Logging, Inc.**
CL 3319 Town Rd. 208
International Falls, MN 56649
Ph: (218) 244-5646
wallypelland@gmail.com
- LP97F077 **Peterson Logging, Inc.**
CV 7911 County Road 82
Loman, MN 56654
Ph: (218) 360-2141
- LP17F990 **Schrock, Lester**
CV 3510 County Rd. 1
Littlefork, MN 56653
Ph: (218) 283-4136
lesterschrocks@gmail.com
- LP18F1015 **Sunne Logging LLC**
CV 5762 Hwy. 11
International Falls, MN 56649
Ph: (218) 324-0643
Cell/Ph2: (218) 341-1798
luke3894@hotmail.com
- LP21F1089 **Tom Boes Logging, Inc.**
CV P.O. Box 322
211 4th St. NW
Big Falls, MN 56627
Ph: (218) 244-0984



2022 MLEP MEMBERSHIP DIRECTORY

Alphabetical Listing by County

LP18F1059 **Ungerecht Trucking &**

CV **Farm LLC**
13047 Town Rd. 298
Northome, MN 56661
Ph: (218) 395-0301
Cell/Ph2: (218) 395-0301
csju@paulbunyan.net

LP98F343 **Wagner Construction, Inc.**

CV 3151 Hwy. 53
International Falls, MN 56649
Ph: (218) 283-3700
Fax: (218) 283-1043
dennis@
wagnerconstructioninc.com

LP16F975 **White, Jesse**

CV P.O. Box 541
Northome, MN 56661
Ph: (218) 244-9910
dmcken22@hotmail.com

LP97F253 **Whitefish Creek Ent., Inc.**

CV 1393 County Rd. 4
Baudette, MN 56623
Ph: (218) 634-2486

WD98F279 **Ziamba & Sons, Inc.**

CV 6002 County Rd. 1
Littlefork, MN 56653
Ph: (218) 278-6735
Cell/Ph2: (218) 244-0761
Fax: (218) 278-4152
ziambalogging@gmail.com

Lake

LP97F213 **Bailey Logging**

CV HF 4766 Hwy. 2
Two Harbors, MN 55616
Ph: (218) 834-4676
Cell/Ph2: (218) 721-6424
baileys3@frontiernet.net

LP00F424 **Fjeran Forest Products LLC**

CV CL 1801 Hwy. 3
Two Harbors, MN 55616
Ph: (218) 834-4717
Cell/Ph2: (218) 428-2363
blake.fjeran@gmail.com

LP12F899 **Goutermont Logging**

CV CL HF 4721 Hwy. 3
Silver Bay, MN 55614
Ph: (218) 226-3465
Cell/Ph2: (218) 220-8987

LP97F152 **Holden Logging LLC**

CL P.O. Box 557
Finland, MN 55603
Ph: (218) 220-8120
holdenlogging@gmail.com

LP00F432 **Jule Fosters Logging**

CV 1690 Slate Rd.
Isabella, MN 55607
Ph: (218) 235-8700
Cell/Ph2: (218) 365-7133
Fax: (218) 365-2251
joetina05@gmail.com



LP05F628 **Kevin Kallinen Contracting**
CV 5107 Mt. Rockwood Road
P.O. Box 7
Silver Bay, MN 55614
Ph: (218) 226-4916
kkcontracting@hotmail.com

LP15F984 **Tibbetts Trucking, Inc.**
CV CL 6389 Lax Lake Rd.
Finland, MN 55603
Ph: (218) 220-0307
gtibbetts1@live.com

Lake of the Woods

LP07F681 **Big Bear Farms LLC**
CV 1471 33rd Ave. SE
Baudette, MN 56623
Ph: (218) 634-0926

LP00F409 **Ferrier Logging, Inc.**
CV 585 County Rd. 6 SW
Baudette, MN 56623
Ph: (218) 766-2287
ferrierlogging@gmail.com

LP21F1093 **Larson Logging**
CL HF 1556 Rangeline Rd. SW
Williams, MN 56686
Ph: (218) 783-7113
Cell/Ph2: (218) 202-0252
wolfylarson@yahoo.com

LP04F617 **Larson, Kenneth G.**
HF 880 County Rd. 89
Baudette, MN 56623
Ph: (218) 634-2540
Cell/Ph2: (218) 434-0855
lars2ken@gmail.com

LP01F489 **Ravndalen Logging**
CV Box 117
Roosevelt, MN 56673
Ph: (218) 442-7102
Cell/Ph2: (218) 766-3892

LP18F1021 **Williams Wood Products LLC**
CV 1513 76th Ave. NW
Williams, MN 56686
Ph: (218) 766-9924
Cell/Ph2: (218) 766-9924
kfish@wiktel.com

Mahnomen

LP07F676 **Wichern Logging**
CV 2690 State Hwy. 113
Waubun, MN 56589
Ph: (218) 473-2536

Marshall

LP22F1133 **Moe Logging**
CV 30003 400th Ave NE
Grygla, MN 56727
Ph: (218) 294-6647
Cell/Ph2: (218) 689-0828
jmoe@gvtel.com

Mille Lacs

LP21F1083 **Midstate Wood Products**
CV 17665 Grouse Rd.
Little Falls, MN 56345
Ph: (320) 420-1283
dthomsen@jetup.net



2022 MLEP MEMBERSHIP DIRECTORY

Alphabetical Listing by County

LP21F1153 **Northern Pines Logging LLC**
CL 16729 200th St.
Milaca, MN 56353
Ph: (320) 630-7125
Cell/Ph2: (320) 224-0614
northernpineslogging@gmail.com

Provisional **R & R Firewood**
1151 11603 290th St.
CV Onamia, MN 56359
Ph: (320) 339-1890
rstraka@hotmail.com

LP11F859 **Timberline Trucking, Inc.**
CL 11085 330th St.
Onamia, MN 56359
Ph: (320) 760-9187
dosabeck@frontier.com

Morrison

LP09F786 **Hennen Enterprises, LLC**
CL 24031 133rd St.
Pierz, MN 56364
Ph: (320) 630-3651
Cell/Ph2: (320) 630-3651
kw.hennen92@gmail.com

LP07F672 **Madsen, Bill W.**
HF 17725 Carter Ln.
Little Falls, MN 56345
Ph: (320) 630-1998
bcmadsen@charter.net

LP20F1069 **N & S Logging**
CL HF 705 4th Ave. NE
Little Falls, MN 56345
Ph: (320) 360-0739

LP17F988 **Nelson Logging LLC**
CV CL HF 9418 N Hwy. 238
Little Falls, MN 56345
Ph: (320) 260-3832
mark@jmslogcreations.com

LP21F1085 **Osvold Logging LLC**
CV 18989 263rd St.
Fort Ripley, MN 56449
Ph: (320) 630-7793
Cell/Ph2: (320) 630-5193
osvold@brainerd.net

LP06F664 **Zajac Logging LLC**
CV HF 9526 410th Ave.
Hillman, MN 56338
Ph: (320) 355-2522
Cell/Ph2: (320) 980-0429
zajacelk@jetup.net

Olmsted

LP97F260 **Mulholland Logging, Inc.**
CV HF 5277 Hwy 42 NE
Eyota, MN 55934
Ph: (507) 876-2395
bonmulholland@aol.com

Pine

LP02F552 **Carlson Timber Products, Inc.**
CV CP GR 53778 Fir Ln.
Sandstone, MN 55072
Ph: (320) 245-2920
Cell/Ph2: (612) 390-4843
Fax: (320) 245-2933
www.carlsontimberproducts.com
sue@carlsontimber.com



LP97F208 **Central Pine Lumber**
CV CP **Company LLC**
33135 Aspen Rd.
Brook Park, MN 55007
Ph: (612) 390-9172
bradrootkie@me.com

LP15F961 **CTP Chipping, Inc.**
CV CP GR 53778 Fir Ln.
Sandstone, MN 55072
Ph: (320) 245-2920
Fax: (320) 245-2933
www.carlson timberproducts.com
sue@carlson timber.com

LP11F860 **Glienke, Duane A.**
HF 55315 Tamarack River Rd.
Sandstone, MN 55072
Ph: (763) 607-7415
glienkeduane@gmail.com

LP04F619 **H & S Logging, LLC**
CV HF 45816 Sand River Rd.
Hinckley, MN 55037
Ph: (320) 630-8360

LP15F944 **Horsmann Precast**
CV 78416 Choke Cherry Rd.
Finlayson, MN 55735
Ph: (320) 216-5073
Cell/Ph2: (218) 658-4432

LP12F909 **Josh Williams Trucking & Logging**
CV 91263 Horizon Trail
Sturgeon Lake, MN 55783
Ph: (218) 380-0926
jwtruckinglogging@gmail.com

LP03F583 **Patzoldt Brothers Inc.**
CV 20111 Black Bird Rd.
Pine City, MN 55063
Ph: (612) 390-5012
Cell/Ph2: (612) 390-6673
joepatzoldt@yahoo.com

Provisional **Sauter Logging**
1161 13480 Ravine Rd.
CV Pine City, MN 55063
Ph: (320) 434-5244

LP17F992 **Smith, Daniel O.**
HF 51120 Deerfield Rd.
Kerrick, MN 55756
Ph: (612) 790-0362
danottosmith@gmail.com

Polk

LP11F857 **D.R. Gravel & Logging**
CV 11919 410th St. SW
Fertile, MN 56540
Ph: (218) 686-0841
Cell/Ph2: (218) 686-0841
ddrice@gvtel.com

Ramsey

LP19F1055 **Black Spruce Holdings LLC**
HF 1463 Brenner Ave.
Roseville, MN 55113
Ph: (651) 208-2967
Cell/Ph2: (651) 208-2967
www.sprucetops.com
contact@sprucetops.com



2022 MLEP MEMBERSHIP DIRECTORY

Alphabetical Listing by County

Roseau

LP20F1070 **Battles, Rodney**

HF 69399 310th St.
Roosevelt, MN 56673
Ph: (218) 442-5121
Cell/Ph2: (218) 469-3815
janetbattles69399@yahoo.com

LP22F1122 **Bourman Logging**

CV CL HF 28576 670th Ave.
Warroad, MN 56763
Ph: (218) 386-3933
Cell/Ph2: (218) 242-1216
bourmanlogging@hotmail.com

LP97F018 **Calder Logging**

CV 57337 350th St. NW
Warroad, MN 56763
Ph: (218) 689-0645
calderlogging@gmail.com

LP00F388 **Cole Logging & Livestock, Inc.**

CV 27443 630th Ave.
Warroad, MN 56763
Ph: (218) 242-0813
coleglogging@gmail.com

LP08F736 **Creger Logging and Farms**

CV 45524 150th St.
Roseau, MN 56751
Ph: (218) 425-7726
Cell/Ph2: (218) 242-2616
Fax: (218) 425-7726
brettcregercons@wiktel.com

LP21F1145 **Eidsmoe Logging**

HF 36147 273rd St.
Roseau, MN 56751
Ph: (218) 242-1586

LP22F1157 **Eidsmoe, Kerby L.**

HF 800 2nd St. NE
Roseau, MN 56751
Ph: (218) 469-0333

LP22F1128 **Eidsmoe, Leif K.**

CL HF 33027 490th Ave.
Salol, MN 56756
Ph: (218) 469-0848
Cell/Ph2: (218) 469-0848
leif_eidsmoe@roseauschool.org

LP19F1047 **Kalbakdalen, Timothy S.**

CV HF 45981 County Rd. 18
Wannaska, MN 56761
Ph: (218) 425-4295
jtk@wiktel.com

LP21F1112 **L & V Logging**

HF 51781 350th St.
Salol, MN 56756
Ph: (218) 689-1597

LP16F964 **Skoien, Clayton**

CV 44741 County Rd. 20
Roseau, MN 56751
Ph: (218) 242-2694
clskoien@gmail.com

**St. Louis**

- LP13F919 **Arvila Logging**
CV 10911 Goodell Rd.
Angora, MN 55703
Ph: (218) 742-2223
bradarvila@yahoo.com
- LP06F659 **Baudek Logging LLC**
CV HF 5201 Hwy. 100
Aurora, MN 55705
Ph: (218) 780-6998
matthewb1972@hotmail.com
- LP21F1082 **Brad Horsmann Logging LLC**
CL HF 7832 Hwy. 73
Angora, MN 55703
Ph: (218) 256-2765
b.horse@live.com
- LP21F1094 **Brandon Suonvieri Timber**
CV 11118 Mirbat Rd.
Floodwood, MN 55736
Ph: (218) 476-2406
Cell/Ph2: (218) 348-7904
BSuonvieri@icloud.com
- Provisional **Broin Timber Harvesting**
1162 4910 Arnold Rd.
CV Duluth, MN 55803
Ph: (218) 591-4523
garybroin@hotmail.com
- LP97F019 **Carlson Logging & Trucking**
CV CP 5495 Hwy. 31
Culver, MN 55779
Ph: (218) 453-5694
Fax: (218) 453-5695
- LP14F948 **CREC Corp.**
5300 Road 70
Embarrass, MN 55732
Ph: (218) 780-0203
timbertom2020@yahoo.com
- LP97F134 **Douglas Hustad Logging, Inc.**
CV 4566 W Raymond Rd.
Gilbert, MN 55741
Ph: (218) 410-2116
- LP98F295 **Glenn Erickson Logging**
CV CL HF 4258 Schweiger Rd.
Orr, MN 55771
Ph: (218) 757-3342
Cell/Ph2: (218) 290-3353
- LP20F1067 **Goggleye Logging**
CV HF 12997 Palmquist Rd.
Orr, MN 55771
Ph: (218) 780-2288
Cell/Ph2: (218) 780-2288
jagoggleye@yahoo.com
- LP02F543 **Heesaker Forest Products**
HF P.O. Box 285
2237 Hwy. 88
Ely, MN 55731
Ph: (218) 365-7357
classywildmark@yahoo.com
- LP00F450 **Hellman's Logging**
CV 1530 Dakota Dr.
Brimson, MN 55602
Ph: (218) 848-2551
khellman1530@gmail.com



2022 MLEP MEMBERSHIP DIRECTORY

Alphabetical Listing by County

- LP13F923 **Hull Forest Products LLC**
CV CL 5511 N Tischer Rd.
CP GR Duluth, MN 55804
Ph: (218) 349-9266
www.forest.solutions
josh_hull@live.com
- LP09F798 **L. Murphy Construction, Inc.**
CV 603 Kawishiwi Tr.
Ely, MN 55731
Ph: (218) 365-3214
Cell/Ph2: (218) 343-0343
lmurphy@frontiernet.net
- LP02F509 **Jatco, Inc.**
CV CL 4995 Lakeview Dr.
Duluth, MN 55804
Ph: (218) 780-1952
jatco_inc@yahoo.com
- LP15F954 **Lobb Forest Enterprises, LLC**
CV CP 5197 Farmers Rd.
Makinen, MN 55763
Ph: (218) 410-4291
belobb73@gmail.com
- LP97F256 **John Rolle Logging, Inc.**
CV 1200 5th Ave. NW
Chisholm, MN 55719
Ph: (218) 969-1076
Fax: (218) 254-7860
JohnRolleLogging@gmail.com
- LP99F371 **Mayranen Logging**
CV HF 2342 Clark Lake Rd.
Ely, MN 55731
Ph: (218) 365-5848
Cell/Ph2: (218) 235-7887
ecmayranen@yahoo.com
- LP21F1101 **Kraabel Logging LLC**
CL 2758 Hwy. 53
Gheen, MN 55771
Ph: (218) 750-2443
Cell/Ph2: (218) 750-2442
- LP08F745 **Mike Nielsen Logging, Inc.**
CV 1979 Sotlich Rd.
Ely, MN 55731
Ph: (218) 365-3037
nielsenlogging@frontier.com
- LP16F962 **Krueger Forest Products LLC**
CV CL HF 5304 Twin Lakes Loop 45
Aurora, MN 55705
Ph: (218) 638-2836
Cell/Ph2: (218) 780-1204
angel.kitty@hotmail.com
- LP97F243 **Mike Zauhar Logging**
CV 5830 Hwy. 5
Alborn, MN 55702
Ph: (218) 476-2914
zauharmichael@gmail.com
- LP97F052 **Kuehl's Logging, LLC**
CV 1565 Hwy. 1
Ely, MN 55731
Ph: (218) 365-5504
kuehlslogging@frontier.com



- LP22F1136 **Northland Logging & Trucking Inc.**
CV 10647 Hwy. 23
Orr, MN 55771
Ph: (218) 969-7320
Cell/Ph2: (218) 290-0660
northlandloggingandtrucking@yahoo.com
- LP18F1013 **Raad Logging Inc.**
CL 3805 Scout Camp Rd.
Eveleth, MN 55734
Ph: (218) 780-1696
nick@raadlogging.com
- LP00F451 **Ron Tveiten Logging**
CV 1338 Townline Rd.
Brimson, MN 55602
Ph: (218) 848-2864
Cell/Ph2: (218) 343-4317
- Provisional **Rutchasky Enterprises Inc.**
1155 **DBA Portage Const.**
CV 8030 Orr-Buyck Rd.
Buyck, MN 55771
Ph: (218) 749-9338
Cell/Ph2: (218) 993-2243
Fax: (218) 993-0909
rutchaskyenterprises@yahoo.com
- LP02F524 **Sandstrom Trucking**
CV 12285 Evergreen Rd.
Floodwood, MN 55736
Ph: (218) 390-3168
Fax: (218) 476-3268
sandstromtrucking@gmail.com
- LP00F389 **Schreffler Logging**
CV HF 1647 Hwy. 1
Ely, MN 55731
Ph: (218) 365-6655
Cell/Ph2: (218) 340-1630
Jim's text ok
- LP11F873 **Shermer Logging**
CV CP 2972 Willow River Jct.
Gheen, MN 55771
Ph: (218) 742-7592
Cell/Ph2: (218) 742-7592
cliffshermer@yahoo.com
- LP15F949 **Sunne Forest Products**
CV 7232 Morris Thomas Rd.
Cloquet, MN 55720
Ph: (218) 340-6470
- LP19F1034 **Truaxe Forest Harvesting LLC**
CV CP 912 1/2 15th Street North
Virginia, MN 55792
Ph: (218) 750-2725
truaxellc@yahoo.com
- LP16F971 **Waste Wood Recyclers LLC**
CV CP GR 5077 Jean Duluth Rd.
Duluth, MN 55803
Ph: (218) 428-1477
Cell/Ph2: (218) 349-4019
Fax: (218) 525-5750
wastewoodrecyclers@gmail.com
- LP20F1074 **Watters Excavating**
CV 6199 Rice Lake Road
Duluth, MN 55803
Ph: (218) 576-2664
williewatters@icloud.com



2022 MLEP MEMBERSHIP DIRECTORY

Alphabetical Listing by County

LP11F868 **Wood Forest Products, Inc.** LP07F684 **Haverinen Brothers Logging**
CV CP P.O. Box 157 CV CL 10097 350th St.
Cotton, MN 55724 Menasha, MN 56464
Ph: (218) 345-6483 Ph: (218) 849-4287
peterwood@frontiernet.net Cell/Ph2: (218) 564-5253

LP21F1090 **Wood Timber Enterprises, Inc.** LP03F574 **Hodgden Logging, Inc.**
CV 7380 Harris Rd. CV CL 38114 Twin Lakes Rd.
Canyon, MN 55717 HF CP Menasha, MN 56464
Ph: (218) 345-6521 Ph: (218) 564-5081
Cell/Ph2: (218) 590-9229 Cell/Ph2: (218) 639-1574
Fax: (218) 345-6521 lylehodgden@hotmail.com
woodtimber@frontier.com

Wabasha

LP11F862 **Gusa, John K**
HF 64732 143rd Ave.
Wabasha, MN 55981
Ph: (507) 273-7152
Cell/Ph2: (651) 565-5389
login.john@yahoo.com

LP22F1130 **JWD Trucking LLC**
CL 26579 US Hwy. 71
Sebeka, MN 56477
Ph: (320) 267-3179
joedidier@hotmail.com

Washington

LP10F975 **Hawkeye Forest Products, LP**
CV 23822 Third St.
Trempealeau, WI 54661
Ph: (608) 534-6892
Fax: (608) 534-6871
robertsawinski8210@gmail.com

LP01F482 **Bildeaux Services**
CV HF 21473 Manning Trail N
Scandia, MN 55073
Ph: (612) 819-9465
Cell/Ph2: (612) 819-9465
BildeauxServices@frontiernet.net

Wadena

LP97F021 **Edin Logging Inc.**
CV CL HF 17791 Wilderness Drive
Staples, MN 56479
Ph: (218) 639-1943
Fax: (218) 445-5409
mkedin@yahoo.com



**DON'T JUST SET YOUR GOALS.
GO GET YOUR GOALS.**

LET'S MAKE YOUR PLANS A REALITY, TOGETHER.

We see the potential in your plans. Our timber lending specialists provide financial solutions for your unique needs – **from equipment loans and leases to real estate financing, fleet services and more** – designed to give you the tools needed to succeed. In an industry that's becoming increasingly complex, our experienced financial team will guide you every step of the way.

Partner with us to make your goals possible.

[COMPEER.COM/GOALS](https://compeer.com/goals)

John Marchand

Sr. Timber Lending Specialist

(218) 216-3989

John.Marchand@compeer.com

Julie Miles

Associate Timber Lending Specialist

(218) 290-2260

Julie.Miles@compeer.com



(844) 426-6733 | #CHAMPIONRURAL



Compeer Financial can provide assistance with timber financing and operations based on historical data and industry expertise. Compeer Financial does not provide legal advice or certified financial planning. Compeer Financial, ACA is an Equal Credit Opportunity Lender and Equal Opportunity Provider and Employer. ©2020 All rights reserved.



The following Logging Businesses have completed program requirements necessary to achieve full membership status, unless noted as Provisional.

Membership Listing Alphabetical by Company Name

The following two letter codes indicate operation types.

CL Cut to Length

CV Conventional

HF Hand Felling

CP Chipper

GR Grinder

HL Horse Logging

- LP02F561 **Affield Logging**
CV 32699 Everts Rd. NE
Blackduck, MN 56630
Ph: (218) 766-8978
Cell/Ph2: (218) 243-2539
bonnieaffield@gmail.com
Beltrami
- LP19F1026 **Agurkis Logging**
CV 196 Lakeshore Drive
Moose Lake, MN 55767
Ph: (218) 380-1708
Carlton
- LP97F118 **Aho Forest Products**
CV 2674 S Finn Rd.
Kettle River, MN 55757
Ph: (218) 273-4593
gerrya@hotmail.com
Carlton
- LP08F727 **Andree Logging**
7507 Fairgrounds Rd. NW
Bemidji, MN 56601
Ph: (218) 766-7895
Cell/Ph2: (218) 751-6903
Beltrami
- LP97F172 **Andy Michalek Logging, Inc.**
CV 54529 Michalek Rd.
Blackduck, MN 56630
Ph: (218) 659-4572
Cell/Ph2: (218) 556-2109
Fax: (218) 659-4320
Itasca
- LP16F998 **Arik Ladd Logging LLC**
CV 23930 Grouse St.
McGregor, MN 55760
Ph: (218) 821-9713
Ladd_Logging@yahoo.com
Aitkin
- LP13F919 **Arvila Logging**
CV 10911 Goodell Rd.
Angora, MN 55703
Ph: (218) 742-2223
bradarvila@yahoo.com
St. Louis
- LP97F153 **B & H Logging LLC**
CV 5300 County Rd. 29
Ray, MN 56669
Ph: (218) 240-4740
fshany@aol.com
Koochiching



2022 MLEP MEMBERSHIP DIRECTORY

Alphabetical Listing by Company Name

- LP97F213 **Bailey Logging**
CV HF 4766 Hwy. 2
Two Harbors, MN 55616
Ph: (218) 834-4676
Cell/Ph2: (218) 721-6424
baileys3@frontiernet.net
Lake
- LP97F137 **Banick Logging, Inc.**
CV CP 19268 County Rd. 3
Brainerd, MN 56401
Ph: (218) 820-4318 shop
Cell/Ph2: (218) 820-5803
banicklogging@brainerd.net
Crow Wing
- LP21F1118 **Bart Johnson & Ed Gehlert Logging**
CV 21521 Buckeye Rd. NE
Blackduck, MN 56630
Ph: (218) 766-4909 Bart
Cell/Ph2: (218) 766-6255 Ed
bartj3659@gmail.com
Beltrami
- LP20F1070 **Battles, Rodney**
HF 69399 310th St.
Roosevelt, MN 56673
Ph: (218) 442-5121
Cell/Ph2: (218) 469-3815
janetbattles69399@yahoo.com
Roseau
- LP06F659 **Baudek Logging LLC**
CV HF 5201 Hwy. 100
Aurora, MN 55705
Ph: (218) 780-6998
matthewb1972@hotmail.com
St. Louis
- WD97F214 **Benson Timber Company**
22383 Nebish Rd. NE
Blackduck, MN 56630
Ph: (218) 835-4525
Fax: (218) 835-4526
kbenson@paulbunyan.net
Beltrami
- LP07F681 **Big Bear Farms LLC**
CV 1471 33rd Ave. SE
Baudette, MN 56623
Ph: (218) 634-0926
Lake of the Woods
- LP19F1057 **Big H Logging**
CV CL 28892 Fire Tower Rd. NE
Blackduck, MN 56630
Ph: (218) 243-2413
Cell/Ph2: (218) 766-2750
Fax: (218) 243-3483
bigoddie@paulbunyan.net
Beltrami
- LP01F482 **Bildeaux Services**
CV HF 21473 Manning Trail N
Scandia, MN 55073
Ph: (612) 819-9465
Cell/Ph2: (612) 819-9465
BildeauxServices@frontiernet.net
Washington
- LP05F629 **Binkley Logging**
CV 4530 Nebish Rd. NE
Tenstrike, MN 56683
Ph: (218) 243-2564
Cell/Ph2: (218) 766-1431
binkley@paulbunyan.net
Beltrami



- LP19F1055 **Black Spruce Holdings LLC**
HF 1463 Brenner Ave.
Roseville, MN 55113
Ph: (651) 208-2967
Cell/Ph2: (651) 208-2967
contact@sprucetops.com
www.sprucetops.com
Ramsey
- LP12F1020 **Bloomquist Construction**
CV 250 Bloomquist Mtn. Rd.
Grand Marais, MN 55604
Ph: (218) 387-2146
Cell/Ph2: (218) 370-0266
bloomquistconstruction@hotmail.com
Cook
- LP22F1121 **Boreen Harvesting**
CL 72158 County Rd. 13
Blackduck, MN 56630
Ph: (218) 368-4275
Cell/Ph2: (218) 835-4225
boreenharvesting@gmail.com
Beltrami
- LP22F1122 **Bourman Logging**
CV CL HF 28576 670th Ave.
Warroad, MN 56763
Ph: (218) 386-3933
Cell/Ph2: (218) 242-1216
bourmanlogging@hotmail.com
Roseau
- LP21F1082 **Brad Horsmann Logging LLC**
CL HF 7832 Hwy. 73
Angora, MN 55703
Ph: (218) 256-2765
b.horse@live.com
St. Louis
- LP21F1094 **Brandon Suonvieri Timber**
CV 11118 Mirbat Rd.
Floodwood, MN 55736
Ph: (218) 476-2406
Cell/Ph2: (218) 348-7904
BSuonvieri@icloud.com
St. Louis
- LP15F957 **Bratlien, Ervin**
CV 46104 US 71
Laporte, MN 56461
Ph: (218) 556-0519
Cell/Ph2: (218) 224-2197
timbcocutter@gmail.com
Hubbard
- LP97F119 **Brekke, Dell**
CV HF 14954 480th St.
Tamarack, MN 55787
Ph: (218) 392-0367
dellbrekke2017@gmail.com
Aitkin
- Provisional **Broin Timber Harvesting**
1162 4910 Arnold Rd.
CV Duluth, MN 55803
Ph: (218) 591-4523
garybroin@hotmail.com
St. Louis
- LP97F016 **Brower-Stomberg Logging**
CV 39813 Log Ln. NE
Kelliher, MN 56650
Ph: (218) 766-1472
gbrower@paulbunyan.net
Beltrami



2022 MLEP MEMBERSHIP DIRECTORY

Alphabetical Listing by Company Name

- LP22F1123 **C & M Walsh Logging, Inc.** LP97F208 **Central Pine Lumber**
CL 614 Malm St. E CV CP **Company LLC**
Park Rapids, MN 56470
Ph: (218) 732-5782
Cell/Ph2: (218) 252-5782
Fax: (218) 732-5782
mswalsh@unitelc.com
Hubbard
33135 Aspen Rd.
Brook Park, MN 55007
Ph: (612) 390-9172
bradrootkie@me.com
Pine
- LP97F018 **Calder Logging** LP22F1124 **Challenger Logging**
CV 57337 350th St. NW CV 1176 Swenson Rd. NE
Warroad, MN 56763 Bemidji, MN 56601
Ph: (218) 689-0645
calderlogging@gmail.com
Roseau
Ph: (218) 368-1920
dudleys@paulbunyan.net
Beltrami
- LP97F019 **Carlson Logging & Trucking** LP21F1106 **Circle H Timber**
CV CP 5495 Hwy. 31 CL 1605 E Hwy 61
Culver, MN 55779 Grand Marais, MN 55604
Ph: (218) 453-5694
Fax: (218) 453-5695
St. Louis
Ph: (218) 387-2396
Cook
- LP02F552 **Carlson Timber Products, Inc.** LP00F388 **Cole Logging & Livestock, Inc.**
CV CP GR 53778 Fir Ln. CV 27443 630th Ave.
Sandstone, MN 55072 Warroad, MN 56763
Ph: (320) 245-2920
Cell/Ph2: (612) 390-4843
Ph: (218) 242-0813
Fax: (320) 245-2933
sue@carlsonstimmer.com
www.carlsonstimmerproducts.com
Roseau
- LP22F1125 **Construction Grade, Inc.**
CV CL HF 1722 Liberty Street
Mora, MN 55051
Ph: (320) 362-4597
chrismahl@gmail.com
Kanabec



- LP14F948 **CREC Corp.**
5300 Road 70
Embarrass, MN 55732
Ph: (218) 780-0203
timbertom2020@yahoo.com
St. Louis
- LP08F736 **Creger Logging and Farms**
CV 45524 150th St.
Roseau, MN 56751
Ph: (218) 425-7726
Cell/Ph2: (218) 242-2616
Fax: (218) 425-7726
brettcregercons@wiktel.com
Roseau
- LP19F1049 **Crowell Logging**
CV 38433 County Highway 35
Waubun, MN 56589
Ph: (218) 255-4512
cliff.crowell@outlook.com
Becker
- LP15F961 **CTP Chipping, Inc.**
CV CP GR 53778 Fir Ln.
Sandstone, MN 55072
Ph: (320) 245-2920
Fax: (320) 245-2933
sue@carlsontimber.com
www.carlsontimberproducts.com
Pine
- LP11F857 **D.R. Gravel & Logging**
CV 11919 410th St. SW
Fertile, MN 56540
Ph: (218) 686-0841
Cell/Ph2: (218) 686-0841
ddrice@gvtel.com
Polk
- LP22F1126 **David J. Aho Forest Products**
CV 2610 S Finn Rd.
Kettle River, MN 55757
Ph: (218) 380-1585
dareyaho71@gmail.com
Carlton
- LP97F252 **DeLack Logging, Inc.**
CV CL P.O. Box 354
Littlefork, MN 56653
Ph: (218) 244-3018
delack@frontiernet.net
Koochiching
- LP97F120 **DeMenge Trucking & Forest Products LLC**
26205 State Hwy. 210
McGregor, MN 55760
Ph: (218) 768-4900
Cell/Ph2: (218) 820-8129
Fax: (218) 768-4187
jrdemenge@gmail.com
Aitkin
- LP97F001 **Dick Walsh Forest Products**
CV CL CP 12873 County 32
Park Rapids, MN 56470
Ph: (218) 732-4154
Cell/Ph2: (218) 732-5665
Fax: (218) 732-8594
walshforestprod@qwestoffice.net
Hubbard



2022 MLEP MEMBERSHIP DIRECTORY

Alphabetical Listing by Company Name

- LP97F123 **Dobbs Logging, Inc.**
CV 5401 County Rd. 77
Littlefork, MN 56653
Ph: (218) 278-4244
Cell/Ph2: (218) 244-2678
thedobbs@frontiernet.net
Koochiching
- LP97F021 **Edin Logging Inc.**
CV CL HF 17791 Wilderness Drive
Staples, MN 56479
Ph: (218) 639-1943
Fax: (218) 445-5409
mkedin@yahoo.com
Wadena
- LP97F155 **Donald W. Nelson Logging, Inc.**
CL 68922 County Rd. 547
Cook, MN 55723
Ph: (218) 376-4638
Cell/Ph2: (218) 969-3402
dwnlogging@gmail.com
Itasca
- LP08F746 **Eichstadt Logging**
2010 Van Buren Ave. SE
Bemidji, MN 56601
Ph: (218) 751-1984
Beltrami
- LP98F349 **Doucette Logging Inc.**
CV 707 Memorial Dr.
International Falls, MN 56649
Ph: (218) 324-2046
osco1975@yahoo.com
Koochiching
- LP21F1145 **Eidsmoe Logging**
HF 36147 273rd St.
Roseau, MN 56751
Ph: (218) 242-1586
Roseau
- LP97F134 **Douglas Hustad Logging, Inc.**
CV 4566 W Raymond Rd.
Gilbert, MN 55741
Ph: (218) 410-2116
St. Louis
- LP22F1157 **Eidsmoe, Kerby L.**
HF 800 2nd St. NE
Roseau, MN 56751
Ph: (218) 469-0333
Roseau
- LP97F202 **Dukek Logging, Inc.**
CV CL 23873 Timber Trail Dr.
Bemidji, MN 56601
Ph: (218) 556-8153
dukek21@yahoo.com
Beltrami
- LP22F1128 **Eidsmoe, Leif K.**
CL HF 33027 490th Ave.
Salol, MN 56756
Ph: (218) 469-0848
Cell/Ph2: (218) 469-0848
leif_eidsmoe@roseauschool.org
Roseau



- LP97F022 **Enberg Logging**
CV CP P.O. Box 186
11785 State Hwy. 64 SW
Motley, MN 56466
Ph: (218) 352-6175
Cell/Ph2: (218) 820-7546
Fax: (218) 352-6432
renberg2@brainerd.net
Cass
- LP21F1109 **Erickson Logging LLC**
CV HF 38322 141st Ave.
Bagley, MN 56621
Ph: (218) 694-6956
Cell/Ph2: (2189) 766-5982
djb99@gvtel.com
Clearwater
- LP97F167 **Erickson Timber Products, Inc.**
CV CL 1801 State Hwy. 72 SE
Baudette, MN 56623
Ph: (218) 634-2599
Cell/Ph2: (218) 556-1868
Fax: (218) 634-1822
ericksontimber@wiktel.com
Koochiching
- LP21F1103 **Fenstermaker Trucking & Logging**
CL 5280 County Rd. 16
Pequot Lakes, MN 56472
Ph: (218) 821-7736
alflogging@yahoo.com
Crow Wing
- LP00F409 **Ferrier Logging, Inc.**
CV 585 County Rd. 6 SW
Baudette, MN 56623
Ph: (218) 766-2287
ferrierlogging@gmail.com
Lake of the Woods
- LP97F112 **Filipiak Logging, LLC**
CL 32869 LaPlant Rd.
Grand Rapids, MN 55744
Ph: (218) 327-1870
Cell/Ph2: (218) 259-0028
ts.flip@mchsi.com
Itasca
- LP00F424 **Fjeran Forest Products LLC**
CV CL 1801 Hwy. 3
Two Harbors, MN 55616
Ph: (218) 834-4717
Cell/Ph2: (218) 428-2363
blake.fjeran@gmail.com
Lake
- LP05F655 **Fletcher Trucking, Inc.**
CV CP 10545 Business 371
Brainerd, MN 56401
Ph: (218) 825-8824
Cell/Ph2: (218) 839-4652
Fax: (218) 825-3715
fletchertrucking@brainerd.net
www.fletchertruckinginc.com
Crow Wing



2022 MLEP MEMBERSHIP DIRECTORY

Alphabetical Listing by Company Name

- LP09F768 **Forseen Logging LLC**
CL 64055 County Rd. 26
Northome, MN 56661
Ph: (218) 766-4378
Cell/Ph2: (218) 659-4439
jforseen73@outlook.com
Itasca
- LP97F025 **Foss Logging**
CV CL 74379 Powderhorn Rd. NW
Grygla, MN 56727
Ph: (218) 294-6233
Cell/Ph2: (218) 689-6584
Beltrami
- LP19F1027 **Fredrickson, Derek**
CV P.O. Box 103
McGregor, MN 55760
Ph: (218) 341-8856
dfredrickson88@gmail.com
Aitkin
- LP97F027 **Frenzel Logging, Inc.**
CV 37471 Willow Creek Rd. NE
Kelliher, MN 56650
Ph: (218) 647-8834
Cell/Ph2: (218) 647-8651
Fax: (218) 647-8834 call first
frenzellogging@gmail.com
Beltrami
- LP02F571 **Fultz Logging LLC**
CV HF 17202 Mosquito Creek Rd.
Bagley, MN 56621
Ph: (218) 766-5450
Fax: (218) 657-2361
bwfultz@gvtel.com
Clearwater
- LP02F525 **Gerbracht Logging, Inc.**
CL 20405 340th St.
Bagley, MN 56621
Ph: (218) 694-2132
Cell/Ph2: (218) 766-2770
Fax: (218) 694-2014
david.gerbracht@gmail.com
Clearwater
- LP22F1129 **Gilbertson, John M.**
CV 9013 Albers Rd. NW
Puposky, MN 56667
Ph: (218) 556-1675
jgfeed90@gmail.com
Beltrami
- LP98F295 **Glenn Erickson Logging**
CV CL HF 4258 Schweiger Rd.
Orr, MN 55771
Ph: (218) 757-3342
Cell/Ph2: (218) 290-3353
St. Louis
- LP11F860 **Glienke, Duane A.**
HF 55315 Tamarack River Rd.
Sandstone, MN 55072
Ph: (763) 607-7415
glienkeduane@gmail.com
Pine
- LP20F1067 **Goggleye Logging**
CV HF 12997 Palmquist Rd.
Orr, MN 55771
Ph: (218) 780-2288
Cell/Ph2: (218) 780-2288
jagoggleye@yahoo.com
St. Louis



LP12F899 **Goutermont Logging**
CV CL HF 4721 Hwy. 3
Silver Bay, MN 55614
Ph: (218) 226-3465
Cell/Ph2: (218) 220-8987
Lake

LP21F1099 **Greg Cook Logging, Inc.**
CV CL 35367 County Rd. 237
Bigfork, MN 56628
Ph: (218) 743-3947
Cell/Ph2: (218) 244-8201
Fax: (218) 743-1947
gcooklogging@gmail.com
Itasca

LP21F1110 **Gregerson Logging**
CV 7159 Little Wolf Rd. NW
Cass Lake, MN 56633
Ph: (218) 335-2138
Cell/Ph2: (218) 820-9563
littlewolfresort@gmail.com
Cass

LP11F862 **Gusa, John K**
HF 64732 143rd Ave.
Wabasha, MN 55981
Ph: (507) 273-7152
Cell/Ph2: (651) 565-5389
loggin.john@yahoo.com
Wabasha

LP97F091 **H & S Logging**
CV 5761 County Rd. 1
Littlefork, MN 56653
Ph: (218) 244-7183
Cell/Ph2: (218) 244-9726
Fax: (218) 278-4364
wcsswenson@gmail.com
Koochiching

LP04F619 **H & S Logging, LLC**
CV HF 45816 Sand River Rd.
Hinkley, MN 55037
Ph: (320) 630-8360
Pine

LP13F910 **Haapoja, George L.**
CV CL P.O. Box 231
45621 State Hwy. 65
McGregor, MN 55760
Ph: (218) 820-5412
h.george@gmail.com
Aitkin

LP97F108 **Hadrava Timber Company, Inc.**
CL 42348 US 71
Laporte, MN 56461
Ph: (218) 224-2729
Cell/Ph2: (218) 820-9149
bhadrava@paulbunyan.net
Hubbard

LP02F567 **Halberg Logging**
22605 County 2
Shevlin, MN 56676
Ph: (218) 657-2788
Cell/Ph2: (218) 657-2289
halbergdan@yahoo.com
Clearwater



2022 MLEP MEMBERSHIP DIRECTORY

Alphabetical Listing by Company Name

- LP09F805 **Hall Logging**
CV CL 280 Hall Rd.
Lutsen, MN 55612
Ph: (336) 480-7385
peterhall619@gmail.com
Cook
- LP97F034 **Hasbargen Logging, Inc.**
CV 1580 Town Rd. 117
Birchdale, MN 56623
Ph: (218) 634-1628
Cell/Ph2: (218) 244-2152
robyn027@centurytel.net
Koochiching
- LP00F433 **Haugan Farm & Log**
21566 Haugan Dr.
Pinewood, MN 56664
Ph: (218) 243-3094
Beltrami
- LP07F684 **Haverinen Brothers Logging**
CV CL 10097 350th St.
Menasha, MN 56464
Ph: (218) 849-4287
Cell/Ph2: (218) 564-5253
Wadena
- LP10F975 **Hawkeye Forest Products, LP**
CV 23822 Third St.
Trempealeau, WI 54661
Ph: (608) 534-6892
Fax: (608) 534-6871
robertsawinski8210@gmail.com
Wabasha
- LP02F543 **Heesaker Forest Products**
HF P.O. Box 285
2237 Hwy. 88
Ely, MN 55731
Ph: (218) 365-7357
classywildmark@yahoo.com
St. Louis
- LP18F1008 **Hege Logging, LLP**
CV CL 4440 Hwy. 71
Littlefork, MN 56653
Ph: (218) 278-4294
Fax: (218) 278-4294
samhege@gmail.com
Koochiching
- LP98F350 **Heikkila Forest Products**
CL CP 2210 County Rd. 61
Carlton, MN 55718
Ph: (218) 348-6806
Cell/Ph2: (218) 348-6806
jandjheikkila@gmail.com
Carlton
- LP00F450 **Hellman's Logging**
CV 1530 Dakota Dr.
Brimson, MN 55602
Ph: (218) 848-2551
khellman1530@gmail.com
St. Louis
- LP09F786 **Hennen Enterprises, LLC**
CL 24031 133rd St.
Pierz, MN 56364
Ph: (320) 630-3651
Cell/Ph2: (320) 630-3651
kw.hennen92@gmail.com
Morrison



- LP22F1159 **Hillside Lumber, Inc.**
CV P.O. Box 357
20250 Upper Rice Lake Rd.
Bagley, MN 56621
Ph: (218) 694-6562
Cell/Ph2: (218) 766-6683
Fax: (218) 694-2964
hillside@gvtel.com
Clearwater
- LP03F574 **Hodgden Logging, Inc.**
CV CL 38114 Twin Lakes Rd.
HF CP Menahga, MN 56464
Ph: (218) 564-5081
Cell/Ph2: (218) 639-1574
lylehodgden@hotmail.com
Wadena
- LP22F1146 **Hofer, Michael J.**
HF 660 County Rd. 60
Grand Marais, MN 55604
Ph: (952) 994-0726
Cell/Ph2: (763) 226-1828
hoaf@boreal.org
Cook
- LP97F152 **Holden Logging LLC**
CL P.O. Box 557
Finland, MN 55603
Ph: (218) 220-8120
holdenlogging@gmail.com
Lake
- LP21F1115 **Hooker Logging Inc.**
CV 40109 County 3
Laporte, MN 56461
Ph: (218) 266-3982
Cell/Ph2: (218) 255-1724
Fax: 218-699-3450
Hubbard
- LP15F944 **Horsmann Precast**
CV 78416 Choke Cherry Rd.
Finlayson, MN 55735
Ph: (320) 216-5073
Cell/Ph2: (218) 658-4432
Pine
- LP13F923 **Hull Forest Products LLC**
CV CL 5511 N Tischer Rd.
CP GR Duluth, MN 55804
Ph: (218) 349-9266
josh_hull@live.com
www.forest.solutions
St. Louis
- LP97F040 **Imhof Logging**
CV 5859 County Rd. 8
Littlefork, MN 56653
Ph: (218) 417-0880
Cell/Ph2: (218) 417-0833
imhofs@frontiernet.net
Koochiching
- LP17F996 **Integrity Logging**
CL 12 Roosevelt St.
Bovey, MN 55709
Ph: (218) 259-1776
Cell/Ph2: (218) 259-1776
zachrahier@hotmail.com
Itasca



2022 MLEP MEMBERSHIP DIRECTORY

Alphabetical Listing by Company Name

- LP97F149 **J & A Logging, Inc.**
CV 6737 Pacific Ave.
Wright, MN 55798
Ph: (218) 428-8289
janaferguson@yahoo.com
Carlton
- LP08F735 **J & N Logging**
CL 12891 Bemidji Rd. NE
Bemidji, MN 56601
Ph: (218) 555-3567
Cell/Ph2: (218) 556-8591
nascar@paulbunyan.net
Beltrami
- LP16F965 **Jason's Logging & Bobcat Service Inc.**
CV CL 12614 Bemidji Rd. NE
Bemidji, MN 56601
Ph: (218) 368-7020
catiev@paulbunyan.net
Beltrami
- LP02F509 **Jatco, Inc.**
CV CL 4995 Lakeview Dr.
Duluth, MN 55804
Ph: (218) 780-1952
jatco_inc@yahoo.com
St. Louis
- LP97F225 **Jobe, Daryl J.**
HF 28577 Norberg Dr.
Grand Rapids, MN 55744
Ph: (218) 244-5299
Itasca
- LP98F351 **Jobe, Peter N.**
HF 20778 Wendigo Park Rd.
Grand Rapids, MN 55744
Ph: (218) 244-5166
Itasca
- WD13F929 **Joe Torgerson Timbers LLC**
CV CL HF 14289 County Road 119
Menasha, MN 56464
Ph: (218) 564-5664
Cell/Ph2: (218) 255-3312
Fax: (218) 564-6125
jrtorgerson724@outlook.com
Becker
- LP11F840 **John Benson Excavating & Logging**
CV HF 27643 Partridge Ave.
Aitkin, MN 56431
Ph: (218) 821-8719
Cell/Ph2: (218) 821-8719
Fax: (218) 678-3572
johnbensonexcavating@yahoo.com
Aitkin
- LP97F256 **John Rolle Logging, Inc.**
CV 1200 5th Ave. NW
Chisholm, MN 55719
Ph: (218) 969-1076
Fax: (218) 254-7860
JohnRolleLogging@gmail.com
St. Louis
- LP10F848 **Johnson Brothers Firewood, LLC**
CV CL P.O. Box 41
Hovland, MN 55606
Ph: (218) 370-2523
Cook



- LP97F006 **Johnson Logging, Inc.**
HF 7557 360th St. Way
Cannon Falls, MN 55009
Ph: (507) 263-5711
Cell/Ph2: (651) 463-9495
jlogging@msn.com
Goodhue
- LP12F909 **Josh Williams Trucking & Logging**
CV 91263 Horizon Trail
Sturgeon Lake, MN 55783
Ph: (218) 380-0926
jwtruckinglogging@gmail.com
Pine
- LP97F045 **Joy Logging**
8429 Bemidji Rd. NE
Bemidji, MN 56601
Ph: (218) 751-2810
gjoy@paulbunyan.net
Beltrami
- LP00F432 **Jule Fosters Logging**
CV 1690 Slate Rd.
Isabella, MN 55607
Ph: (218) 235-8700
Cell/Ph2: (218) 365-7133
Fax: (218) 365-2251
joetina05@gmail.com
Lake
- LP97F046 **Junker Logging Inc.**
CV 5564 County Rd. 8
Littlefork, MN 56653
Ph: (218) 278-4569
Cell/Ph2: (218) 244-1803
junkerlog@frontiernet.net
Koochiching
- LP22F1130 **JWD Trucking LLC**
CL 26579 US Hwy. 71
Sebeka, MN 56477
Ph: (320) 267-3179
joedidier@hotmail.com
Wadena
- LP13F930 **K & M Logging**
CL 31936 State Hwy. 65
McGregor, MN 55760
Ph: (218) 839-7503
wayrynenk@gmail.com
Aitkin
- LP02F511 **K. Anderson Logging**
CV CL HF 984 Cut Off Rd.
Grand Marais, MN 55604
Ph: (218) 370-8918
andersonlogging@live.com
Cook
- LP19F1047 **Kalbakdalen, Timothy S.**
CV HF 45981 County Rd. 18
Wannaska, MN 56761
Ph: (218) 425-4295
jtk@wiktel.com
Roseau
- LP07F693 **Kennedy Logging, Inc.**
CV 4370 Co. Rd. 90E
International Falls, MN 56649
Ph: (218) 244-5053
Cell/Ph2: (218) 283-4985
Koochiching



2022 MLEP MEMBERSHIP DIRECTORY

Alphabetical Listing by Company Name

- LP05F628 **Kevin Kallinen Contracting**
CV 5107 Mt. Rockwood Road
P.O. Box 7
Silver Bay, MN 55614
Ph: (218) 226-4916
kkcontracting@hotmail.com
Lake
- LP07F690 **Kevin Thomas Logging**
CV 17838 Popplewood Rd. NE
Hines, MN 56647
Ph: (218) 835-8179
Cell/Ph2: (218) 766-7178
jody.thomas@mail.com
Beltrami
- LP97F050 **Killmer Brothers, Inc.**
CV P.O. Box 323
1212 Hwy. 6
Big Falls, MN 56627
Ph: (218) 276-2233
Cell/Ph2: (218) 556-0160
dkillmer123@outlook.com
Koochiching
- LP97F122 **Kimball's Logging, Inc.**
CV 24516 Brill Ave.
Park Rapids, MN 56470
Ph: (218) 573-3454
Cell/Ph2: (218) 849-5222
Fax: (218) 573-2295
kimlogs@arvig.net
Becker
- LP19F1056 **Konkel Forest Products**
HF P.O. Box 159
655 Main St.
New Albin, IA 52160
Ph: (563) 544-4600
Cell/Ph2: (563) 419-3051
Fax: (563) 544-4980
kfp@acegroup.cc
Houston
- LP21F1101 **Kraabel Logging LLC**
CL 2758 Hwy. 53
Gheen, MN 55771
Ph: (218) 750-2443
Cell/Ph2: (218) 750-2442
St. Louis
- LP09F753 **Krueger Dirtwerx, Inc.**
CV CP 2962 County Rd. 61
Mahtowa, MN 55707
Ph: (218) 390-6477
Cell/Ph2: (218) 348-8971
kdwforestry@gmail.com
Carlton
- LP16F962 **Krueger Forest Products LLC**
CV CL HF 5304 Twin Lakes Loop 45
Aurora, MN 55705
Ph: (218) 638-2836
Cell/Ph2: (218) 780-1204
angel.kitty@hotmail.com
St. Louis
- LP01F490 **Krueth Logging, Inc.**
CV CL 20122 New Maple Ridge NE
Hines, MN 56647
Ph: (218) 368-6869
briankrueth@gmail.com
Beltrami



LP97F052 **Kuehl's Logging, LLC**
CV 1565 Hwy. 1
Ely, MN 55731
Ph: (218) 365-5504
kuehlslogging@frontier.com
St. Louis

LP21F1084 **L & L Constructors, Inc.**
CV 4471 Hwy. 11
International Falls, MN 56649
Ph: (218) 290-7485
Cell/Ph2: (218) 290-7485
kirk.lindberg@llconstructors.com
Koochiching

LP21F1112 **L & V Logging**
HF 51781 350th St.
Salol, MN 56756
Ph: (218) 689-1597
Roseau

LP18F1025 **L. D. Kuschel, Inc.**
CV 4001 92nd Ave. SW
Sebeka, MN 56477
Ph: (218) 639-4226
Fax: (218) 472.3402
LDKuschel@gmail.com
Cass

LP09F798 **L. Murphy Construction, Inc.**
CV 603 Kawishiwi Tr.
Ely, MN 55731
Ph: (218) 365-3214
Cell/Ph2: (218) 343-0343
lmurphy@frontiernet.net
St. Louis

LP10F832 **Lang, Arthur R.**
CV 12736 State 200
Mahnomens, MN 56557
Ph: (218) 935-2969
Clearwater

LP21F1093 **Larson Logging**
CL HF 1556 Rangeline Rd. SW
Williams, MN 56686
Ph: (218) 783-7113
Cell/Ph2: (218) 202-0252
wolfylarson@yahoo.com
Lake of the Woods

LP07F671 **Larson, Daryn J.**
CV 39506 County Road 225
Bigfork, MN 56628
Ph: UNPUBLISHED
Itasca

LP04F617 **Larson, Kenneth G.**
HF 880 County Rd. 89
Baudette, MN 56623
Ph: (218) 634-2540
Cell/Ph2: (218) 434-0855
lars2ken@gmail.com
Lake of the Woods

LP08F761 **Lawyer, Mark A.**
CV 23326 County Rd. 9
Bemidji, MN 56601
Ph: (218) 556-7651
Cell/Ph2: (218) 333-0997
Hubbard



2022 MLEP MEMBERSHIP DIRECTORY

Alphabetical Listing by Company Name

- LP97F229 **Leino Logging**
CV 3809 Gilbert Rd.
Barnum, MN 55707
Ph: (218) 389-6169
jodyw4444@aol.com
Carlton
- LP22F1131 **Leo's Firewood Services LLC**
CV HF 21570 County 44
Laporte, MN 56461
Ph: (218) 556-8960
leosfirewood@gmail.com
Hubbard
- LP21F1104 **Lester Parker Logging**
CV 7112 37th Ave. SW
Pequot Lakes, MN 56472
Ph: (218) 568-2464
Cell/Ph2: (218) 820-4712
lesjulparker@yahoo.com
Cass
- LP18F1012 **Little Logging**
CV P.O. Box 502
5049 Industrial Ave.
Littlefork, MN 56653
Ph: (218) 278-6758
Cell/Ph2: (218) 244-6331
Koochiching
- LP15F954 **Lobb Forest Enterprises, LLC**
CV CP 5197 Farmers Rd.
Makinen, MN 55763
Ph: (218) 410-4291
belobb73@gmail.com
St. Louis
- LP97F263 **Lovdahl & Sons LLC**
CV CP 35093 County Rd. 40
Effie, MN 56639
Ph: (218) 244-5135
Itasca
- LP97F059 **Lund Logging**
CV HF 1350 Middle Rd.
Cromwell, MN 55726
Ph: (218) 565-0502 (Rodney)
Cell/Ph2: (218) 565-1263
(Russell)
lalund62@yahoo.com
Carlton
- LP97F060 **Lundberg Forest Products, Inc.**
CV 3835 Centerline Rd. NW
Solway, MN 56678
Ph: (218) 467-3300
Cell/Ph2: (218) 766-9883
Beltrami
- LP08F719 **Lyseng Logging, Inc.**
CV 13804 Kelm Rd. NW
Bemidji, MN 56601
Ph: (218) 444-7083
Cell/Ph2: (218) 766-5805
lysenglogging@gmail.com
Beltrami
- LP97F124 **M & S Logging, LLC**
CV P.O. Box 106
Backus, MN 56435
Ph: (218) 838-8402
Cell/Ph2: (218) 838-8402
mslogging@tds.net
Cass

2022 MLEP MEMBERSHIP DIRECTORY



Alphabetical Listing by Company Name

- LP15F959 **M&M Logging & Son, Inc.**
CL 73552 County Rd. 13
Blackduck, MN 56630
Ph: (218) 835-7763
Cell/Ph2: (218) 368-4681
mmloggingson@gmail.com
Beltrami
- LP07F672 **Madsen, Bill W.**
HF 17725 Carter Ln.
Little Falls, MN 56345
Ph: (320) 630-1998
bcmadsen@charter.net
Morrison
- LP21F1096 **Mai-Best Logging, Inc.**
CV 8464 Hwy. 11
Baudette, MN 56623
Ph: (218) 280-0669
Cell/Ph2: (218) 244-0434
maibestlogging2019@gmail.com
Koochiching
- LP98F290 **Mark Demenge Timber Products**
CV HF 41357 230th Ave.
McGregor, MN 55760
Ph: (218) 355-8358
lmarklog@gmail.com
Aitkin
- LP97F106 **Marty Johnson Logging**
CV HF 10298 480th St.
Tamarack, MN 55787
Ph: (218) 357-3910
Cell/Ph2: (218) 839-7731
martyjlogging@yahoo.com
Aitkin
- Provisional **Matthees Tree Care LLC**
1148 17926 Meadow Circle
CV HF Audubon, MN 56511
Ph: (701) 212-2433
mattheestrecare@gmail.com
Becker
- LP99F371 **Mayranen Logging**
CV HF 2342 Clark Lake Rd.
Ely, MN 55731
Ph: (218) 365-5848
Cell/Ph2: (218) 235-7887
ecmayranen@yahoo.com
St. Louis
- LP15F962 **McCarroll Timber Harvesting**
CL 49286 County Rd. 334
Bigfork, MN 56628
Ph: (218) 256-4784
Cell/Ph2: (218) 245-1759
mcdaboo@hotmail.com
Itasca
- Provisional **Meighen Forest Products**
1147 18590 Orion Rd.
CV HF HL Spring Valley, MN 55975
Ph: (507) 259-8000
Cell/Ph2: (507) 259-8000
meighenforestproducts@gmail.com
Fillmore
- Provisional **Mentges Logging**
1156 31119 Co. Rd. 139
CV Deer River, MN 56636
Ph: (218) 246-8069
Cell/Ph2: (218) 259-8789
mentgeslogging@gmail.com
Itasca



2022 MLEP MEMBERSHIP DIRECTORY

Alphabetical Listing by Company Name

- LP21F1083 **Midstate Wood Products**
CV 17665 Grouse Rd.
Little Falls, MN 56345
Ph: (320) 420-1283
dthomsen@jetup.net
Mille Lacs
- LP01F469 **Mike Gates Logging LLC**
CV P.O. Box 413
Big Falls, MN 56627
Ph: (218) 368-0623
mcgates@citlink.net
Koochiching
- LP08F745 **Mike Nielsen Logging, Inc.**
CV 1979 Sotlich Rd.
Ely, MN 55731
Ph: (218) 365-3037
nielsenlogging@frontier.com
St. Louis
- LP22F1132 **Mike Thomas Logging**
CV 7660 Memorial Ln. NW
Bemidji, MN 56601
Ph: (218) 766-1179
sat83@yahoo.com
Beltrami
- LP97F243 **Mike Zauhar Logging**
CV 5830 Hwy. 5
Alborn, MN 55702
Ph: (218) 476-2914
zauharmichael@gmail.com
St. Louis
- LP17F984 **Minnesota Timber, LLC**
CV CL P.O. Box 315
12209 State Hwy. 18
Brainerd, MN 56401
Ph: (218) 828-4636
Cell/Ph2: (218) 820-4694
Fax: (218) 824-1510
adechantal@gmail.com
Crow Wing
- LP09F776 **Mistic Logging**
CV 27803 Irvine Ave. NE
Puposky, MN 56667
Ph: (218) 243-2607
Beltrami
- LP22F1133 **Moe Logging**
CV 30003 400th Ave NE
Grygla, MN 56727
Ph: (218) 294-6647
Cell/Ph2: (218) 689-0828
jmoe@gvtel.com
Marshall
- LP00F397 **MRJ Logging**
HF 12921 Centerline Rd. NW
Pinewood, MN 56676
Ph: (218) 243-2843
Cell/Ph2: (218) 766-8584
Fax: (218) 243-2843
Beltrami
- LP97F260 **Mulholland Logging, Inc.**
CV HF 5277 Hwy 42 NE
Eyota, MN 55934
Ph: (507) 876-2395
bonmulholland@aol.com
Olmsted



- LP08F694 **Mullin Logging**
CV 15944 County 9
Becida, MN 56678
Ph: (218) 854-7339
bcmullin@paulbunyan.net
Hubbard
- LP18F1005 **Myers, Alan**
HF 67715 380th Ave.
Hill City, MN 55748
Ph: (218) 392-0448
Aitkin
- LP20F1069 **N & S Logging**
CL HF 705 4th Ave. NE
Little Falls, MN 56345
Ph: (320) 360-0739
Morrison
- LP97F070 **Nelson Brothers Logging**
CV 911 4th St. NW
P.O. Box 437
Big Falls, MN 56627
Ph: (218) 324-2017
Koochiching
- LP17F988 **Nelson Logging LLC**
CV CL HF 9418 N Hwy. 238
Little Falls, MN 56345
Ph: (320) 260-3832
mark@jmslogcreations.com
Morrison
- LP05F645 **Nelson Wood Products of
Togo, Inc.**
CL 68588 Danyluk Rd.
Togo, MN 55723
Ph: (218) 376-4438
Cell/Ph2: (218) 969-2300
oddogs@yahoo.com
Itasca
- LP21F1097 **Newberg Forest Products, Inc.**
CV 35359 State Hwy. 6
Deer River, MN 56636
Ph: (218) 246-9896
Cell/Ph2: (218) 244-4435
jwnewberg@gmail.com
Itasca
- LP97F160 **Northern Forest &
Wildlife Manager**
CV CL HF 130 Par Ln.
Grand Rapids, MN 55744
Ph: (218) 244-1349
tkromy@paulbunyan.net
Itasca
- LP22F1135 **Northern Hardwood &
Marketing Co Inc**
HF 224 Woodshire Dr.
Mankato, MN 56001
Ph: (507) 381-0277
tdrumm2@gmail.com
Blue Earth
- LP97F165 **Northern Logging, Inc.**
CV 18311 Hwy. 2 NW
Solway, MN 56678
Ph: (218) 556-3684
markrb3305@gmail.com
Beltrami



2022 MLEP MEMBERSHIP DIRECTORY

Alphabetical Listing by Company Name

- LP21F1153 **Northern Pines Logging LLC**
CL 16729 200th St.
Milaca, MN 56353
Ph: (320) 630-7125
Cell/Ph2: (320) 224-0614
northernpineslogging@gmail.com
Mille Lacs
- LP97F061 **Northwoods Chipping, Inc.**
CV 3370 County Rd. 108
International Falls, MN 56649
Ph: (218) 283-7981
Cell/Ph2: (218) 244-4477
northwoodschipping@yahoo.com
Koochiching
- Provisional **Northern Timber**
1158 7115 237th Ave. NE
CV HF Stacy, MN 55079
Ph: (651) 462-6076
Cell/Ph2: (651) 332-3336
woodgoods@frontiernet.net
Anoka
- LP16F963 **Northwoods Excavating Services, Inc.**
CV 41086 Scenic Hwy.
Bovey, MN 55709
Ph: (218) 245-3659
Cell/Ph2: (218) 259-4306
northwoods@live.com
Itasca
- LP22F1136 **Northland Logging & Trucking Inc.**
CV 10647 Hwy. 23
Orr, MN 55771
Ph: (218) 969-7320
Cell/Ph2: (218) 290-0660
northlandloggingandtrucking@
yahoo.com
St. Louis
- LP00F393 **Northwoods Timber Harvesting, Inc.**
CL 12992 County Rd. 55
Nashwauk, MN 55769
Ph: (218) 969-5270
john.northwoodstimmer.riipinen@
gmail.com
Itasca
- LP97F156 **Northland Timber Co./ Don Gross & Sons**
CV Box 247
Blackduck, MN 56630
Ph: (218) 835-6688
Beltrami
- LP97F132 **Nylund Logging**
CV P.O. Box 154
Marcell, MN 56657
Ph: (218) 832-3631
Cell/Ph2: (218) 259-9147
Fax: (218) 832-3631
Itasca

2022 MLEP MEMBERSHIP DIRECTORY



Alphabetical Listing by Company Name

- LP97F074 **Olson Forest Products, Inc.**
CV 1725 Washington Ave. S
Bemidji, MN 56601
Ph: (218) 751-3437
Cell/Ph2: (218) 766-1116
olsonforestproducts@gmail.com
Beltrami
- LP12F907 **Padgett Logging**
CV 68914 County Rd. 13
Blackduck, MN 56630
Ph: (218) 244-6376
Cell/Ph2: (218) 835-8894
padgettlogging@yahoo.com
Itasca
- LP03F573 **Olson Logging**
P.O. Box 33
Bagley, MN 56621
Ph: 218-556-6280
Clearwater
- LP21F1086 **Palmer Logging**
CV CL P.O. Box 226
HF CP Barnum, MN 55707
Ph: (218) 389-6189
Cell/Ph2: (218) 380-3932
Fax: (218) 389-9857
jlpdmp02@gmail.com
Carlton
- LP21F1085 **Osvold Logging LLC**
CV 18989 263rd St.
Fort Ripley, MN 56449
Ph: (320) 630-7793
Cell/Ph2: (320) 630-5193
osvold@brainerd.net
Morrison
- LP03F583 **Patzoldt Brothers Inc.**
CV 20111 Black Bird Rd.
Pine City, MN 55063
Ph: (612) 390-5012
Cell/Ph2: (612) 390-6673
joepatzoldt@yahoo.com
Pine
- LP98F329 **Owen & Wentworth Logging**
CV 20908 Hines Rd. NE
Hines, MN 56647
Ph: (218) 556-9363
Cell/Ph2: (218) 556-4363
Beltrami
- LP21F1095 **Paulson Logging**
CV 3440 Adelia Dr. SE
Bemidji, MN 56601
Ph: (218) 556-7176
Cell/Ph2: (218) 556-7176
mpaulson1119@gmail.com
Beltrami
- LP22F1137 **Owen Timber LLC**
CV 17323 Ricepond Rd. NE
Hines, MN 56647
Ph: (218) 835-5732
Cell/Ph2: (218) -766-0803
kaowen@paulbunyan.net
Beltrami
- LP07F680 **Peck, Wesley E.**
13440 Warner Rd. NW
Bemidji, MN 56601
Ph: (218) 243-2855
wepeck@paulbunyan.net
Beltrami



2022 MLEP MEMBERSHIP DIRECTORY

Alphabetical Listing by Company Name

- LP97F076 **Pelland Logging, Inc.**
CL 3319 Town Rd. 208
International Falls, MN 56649
Ph: (218) 244-5646
wallypelland@gmail.com
Koochiching
- LP97F077 **Peterson Logging, Inc.**
CV 7911 County Road 82
Loman, MN 56654
Ph: (218) 360-2141
Koochiching
- LP97F199 **Peura Contracting, Inc.**
CV 3325 County Rd. 131
Kettle River, MN 55757
Ph: (218) 380-3645
Carlton
- LP11F853 **Pillsbury Forest
Hardwoods, Inc.**
11063 Richmond Rd. SW
Pillager, MN 56473
Ph: (218) 746-4004
Cell/Ph2: (218) 839-0734
pillsburyforesthardwoods@
brainerd.net
Cass
- LP07F678 **Pink Logging**
CV 33686 Neumann Rd. NE
Northome, MN 56661
Ph: (218) 360-3553
mpink@paulbunyan.net
Beltrami
- LP21F1094 **Pisarek, John A.**
CV 35108 320th St.
Aitkin, MN 56431
Ph: (218) 839-7803
john.pisarek@gmail.com
Aitkin
- LP97F002 **Pittack Logging, Inc.**
CL 748 County Rd. 440
Bovey, MN 55709
Ph: (218) 245-1768
Cell/Ph2: (218) 259-8148
Fax: (218) 245-2901
pittacks@paulbunyan.net
Itasca
- Provisional **R & R Firewood**
1151 11603 290th St.
CV Onamia, MN 56359
Ph: (320) 339-1890
rstraka@hotmail.com
Mille Lacs
- LP98F301 **R. H. Forest Management**
CV 42740 US 71
Laporte, MN 56461
Ph: (218) 820-8919
rhforestmgmt@gmail.com
Hubbard
- LP97F158 **R.T. Beckman Logging LLC**
CL 27606 Splithand Rd.
Grand Rapids, MN 55744
Ph: (218) 256-1722
beckmantruckingllc@gmail.com
Itasca



- LP18F1013 **Raad Logging Inc.**
CL 3805 Scout Camp Rd.
Eveleth, MN 55734
Ph: (218) 780-1696
nick@raadlogging.com
St. Louis
- LP08F747 **Randy Erickson Logging**
CL 45782 State Hwy. 6
Deer River, MN 56636
Ph: (218) 832-3805
Cell/Ph2: (218) 398-7578
Itasca
- LP01F489 **Ravndalen Logging**
CV Box 117
Roosevelt, MN 56673
Ph: (218) 442-7102
Cell/Ph2: (218) 766-3892
Lake of the Woods
- LP12F901 **Reed, Daniel W.**
CV 6999 Reed Ln.
Kettle River, MN 55757
Ph: (218) 273-6103
reed.dan1949@gmail.com
Carlton
- LP03F613 **Reibel Logging, Inc.**
CV 29689 438th Ln.
Palisade, MN 56469
Ph: (218) 244-8917
Cell/Ph2: (218) 244-8917
Aitkin
- LP05F653 **Rice River Logging**
CV HF 21293 Dam Lake St.
McGregor, MN 55760
Ph: (218) 768-3083
Cell/Ph2: (218) 380-6155
pgelhar@frontiernet.net
Aitkin
- LP98F334 **Richards Brothers, Inc.**
CV 1262 State 64 SW
Backus, MN 56435
Ph: (218) 947-4754
Cell/Ph2: (218) 587-4467
Fax: (218) 587-2313
Cass
- Provisional **Rick's Forest**
1150 **Products, Inc.**
CV 49361 US Hwy. 71
Bemidji, MN 56601
Ph: (218) 333-8888
Cell/Ph2: (218) 766-1798
Fax: (218) 759-1030
kyleschulke@gmail.com
Beltrami
- LP12F885 **Rieger Logging, Inc.**
CV CL HF 61559 County Rd. 26
Northome, MN 56661
Ph: (218) 659-4359
Cell/Ph2: (218) 244-8572
Fax: (218) 659-4560
mrieger@paulbunyan.net
Itasca



2022 MLEP MEMBERSHIP DIRECTORY

Alphabetical Listing by Company Name

- LP20F1071 **Ron Holte Logging**
CV HF 18715 Holm Dr.
Spring Grove, MN 55974
Ph: (507) 450-9867
ronnieholte.rh@gmail.com
Houston
- LP00F451 **Ron Tveiten Logging**
CV 1338 Townline Rd.
Brimson, MN 55602
Ph: (218) 848-2864
Cell/Ph2: (218) 343-4317
St. Louis
- LP02F553 **Ron Weiss Logging, Inc.**
CL 10162 County 41
Park Rapids, MN 56470
Ph: (218) 732-5007
Cell/Ph2: (218) 252-9180
Fax: (218) 732-5007
weissbunch@aol.com
Hubbard
- Provisional **Rutchasky Enterprises Inc.**
1155 **DBA Portage Const.**
CV 8030 Orr-Buyck Rd.
Buyck, MN 55771
Ph: (218) 749-9338
Cell/Ph2: (218) 993-2243
Fax: (218) 993-0909
rutchaskyenterprises@yahoo.com
St. Louis
- LP02F538 **Salmela Logging**
CV CL CP 1785 White Cloud Dr. N
Isle, MN 56342
Ph: (218) 340-6801
salmelalogging@gmail.com
www.salmelalogging.com
Carlton
- LP02F524 **Sandstrom Trucking**
CV 12285 Evergreen Rd.
Floodwood, MN 55736
Ph: (218) 390-3168
Fax: (218) 476-3268
sandstromtrucking@gmail.com
St. Louis
- Provisional **Sauter Logging**
1161 13480 Ravine Rd.
CV Pine City, MN 55063
Ph: (320) 434-5244
Pine
- LP09F794 **Sawyer Enterprises, LLC**
CV CL 317 Front St.
Backus, MN 56435
Ph: (218) 838-7000
Cell/Ph2: (218) 838-7000
Cass
- LP97F236 **Sawyer Timber Company, LLP**
CV P.O. Box 13
Backus, MN 56435
Ph: (218) 947-4032
Cell/Ph2: (218) 232-0350
Fax: (218) 947-4041
renerae6@gmail.com
Cass



- LP16F997 **Schatz Logging**
CV HF 4525 W County 134
Moose Lake, MN 55767
Ph: (218) 380-8855
Cell/Ph2: (218) 485-4860
Carlton
- LP97F084 **Scheff Logging & Trucking, Inc.**
CV CL 48985 State Hwy. 38
Marcell, MN 56657
Ph: (218) 832-6500
Fax: (218) 832-6501
schefflogging@arvig.net
Itasca
- LP00F389 **Schreffler Logging**
CV HF 1647 Hwy. 1
Ely, MN 55731
Ph: (218) 365-6655
Cell/Ph2: (218) 340-1630
Jim's text ok
St. Louis
- LP17F990 **Schrock, Lester**
CV 3510 County Rd. 1
Littlefork, MN 56653
Ph: (218) 283-4136
lesterschrocks@gmail.com
Koochiching
- LP17F991 **Schultz Logging**
HF 46023 State Hwy. 6
Deer River, MN 56636
Ph: (218) 832-3360
Cell/Ph2: (218) 832-3360
Fax: (218) 832-3123
schultz6@bigfork.net
Itasca
- LP11F873 **Shermer Logging**
CV CP 2972 Willow River Jct.
Gheen, MN 55771
Ph: (218) 742-7592
Cell/Ph2: (218) 742-7592
cliffshermer@yahoo.com
St. Louis
- LP97F086 **Simcoe & Habisch Logging**
CL 23693 Kestrel Ave.
McGrath, MN 56350
Ph: (218) 658-4609
carol23693@frontiernet.net
Aitkin
- LP08F715 **Skaro Logging**
56469 170th St.
Menahga, MN 56464
Ph: (218) 564-5849
Cell/Ph2: (218) 820-9324
beckie9@gmail.com
Becker
- LP16F964 **Skoien, Clayton**
CV 44741 County Rd. 20
Roseau, MN 56751
Ph: (218) 242-2694
clskoien@gmail.com
Roseau
- LP02F551 **Smischney Logging**
CV 37724 Willow Creek Rd.
Kelliher, MN 56650
Ph: (218) 647-8366
Cell/Ph2: (218) 766-9842
Beltrami



2022 MLEP MEMBERSHIP DIRECTORY

Alphabetical Listing by Company Name

- LP17F992 **Smith, Daniel O.**
HF 51120 Deerfield Rd.
Kerrick, MN 55756
Ph: (612) 790-0362
danottosmith@gmail.com
Pine
- LP12F890 **Smude Logging**
CV 7921 County Rd. 8
Brainerd, MN 56401
Ph: (218) 764-2283
Fax: (218) 764-2250
smudebill@yahoo.com
Crow Wing
- LP00F460 **Stangler Logging LLC**
CL 7287 124th St. NE
Deer River, MN 56636
Ph: (218) 244-4181
kerspauly@gmail.com
Cass
- LP18F1022 **Stangler Trucking LLC**
CL 12476 72nd Ave. NE
Deer River, MN 56636
Ph: (218) 259-7907
lstangler2833@gmail.com
Cass
- LP22P1144 **Steve Stai Gravel & Landscaping Inc.**
CV 40968 211th Ave.
Bagley, MN 56621
Ph: (218) 308-1234
Cell/Ph2: (218) 308-1234
stevenwstai19@gmail.com
Clearwater
- Provisional **Straight River Forestry**
1154 25627 County Hwy. 48
CV Osage, MN 56570
Ph: (218) 252-0403
shawnmay09@yahoo.com
Becker
- LP12F880 **Suhonen, Roger C.**
CV HF 1472 W Island Lake Rd.
Cromwell, MN 55726
Ph: (218) 348-5379
Carlton
- LP15F949 **Sunne Forest Products**
CV 7232 Morris Thomas Rd.
Cloquet, MN 55720
Ph: (218) 340-6470
St. Louis
- LP18F1015 **Sunne Logging LLC**
CV 5762 Hwy. 11
International Falls, MN 56649
Ph: (218) 324-0643
Cell/Ph2: (218) 341-1798
luke3894@hotmail.com
Koochiching
- LP21F1088 **Teigland Inc.**
CV P.O. Box 986
Red Lake, MN 56671
Ph: (218) 785-3011
gart82@icloud.com
Beltrami



- LP15F984 **Tibbetts Trucking, Inc.**
CV CL 6389 Lax Lake Rd.
Finland, MN 55603
Ph: (218) 220-0307
gtibbetts1@live.com
Lake
- LP19F1052 **Timber Transport, Inc.**
CL 20982 State Hwy. 210
McGregor, MN 55760
Ph: (218) 820-8555
Fax: (218) 768-2264
curt@raveiltrucking.com
Aitkin
- LP11F859 **Timberline Trucking, Inc.**
CL 11085 330th St.
Onamia, MN 56359
Ph: (320) 760-9187
dosabeck@frontier.com
Mille Lacs
- LP17F994 **Timonen Forest Products, LLC**
CV CL 2944 County Rd. 139
Barnum, MN 55707
Ph: (218) 380-1887
timonenfp@gmail.com
Carlton
- LP21F1089 **Tom Boes Logging, Inc.**
CV P.O. Box 322
211 4th St. NW
Big Falls, MN 56627
Ph: (218) 244-0984
Koochiching
- LP19F1061 **Tony C. Aho Trucking & Forest Products**
CV 5440 Mowers Rd.
Cromwell, MN 55726
Ph: (218) 380-9048
emowersaho@hotmail.com
Carlton
- LP18F1016 **Treat Timber LLC**
CL 1509 NE 7th St.
Grand Rapids, MN 55744
Ph: (218) 244-0770
Cell/Ph2: (218) 244-0770
davitreat@gmail.com
Itasca
- LP18F1026 **Trimble Logging**
CV 9758 Trimble Ct. NE
Tenstrike, MN 56683
Ph: (218) 368-6216
Cell/Ph2: (218) 566-6478
rockyou27@yahoo.com
Beltrami
- LP97F210 **Trout Enterprises, Inc.**
CV CL HF P.O. Box 236
Deer River, MN 56636
Ph: (218) 246-8165
Cell/Ph2: (218) 244-7190
Fax: (218) 246-2086
dctrout@paulbunyan.net
Itasca
- LP19F1034 **Truaxe Forest Harvesting LLC**
CV CP 912 1/2 15th Street North
Virginia, MN 55792
Ph: (218) 750-2725
truaxellc@yahoo.com
St. Louis



2022 MLEP MEMBERSHIP DIRECTORY

Alphabetical Listing by Company Name

- LP16F970 **Tveit Logging & Lumber**
CV 27654 480th St.
Palisade, MN 56469
Ph: (218) 838-0014
joetveit@yahoo.com
Aitkin
- LP22F1140 **Tyler's Backhoe Service**
CL P.O. Box 454
Walker, MN 56484
Ph: (218) 820-4588
Cell/Ph2: (218) 820-4588
tylercrow@arvig.net
Cass
- LP18F1059 **Ungerecht Trucking & Farm LLC**
CV 13047 Town Rd. 298
Northome, MN 56661
Ph: (218) 395-0301
Cell/Ph2: (218) 395-0301
csju@paulbunyan.net
Koochiching
- LP22F1142 **Wabana Clearing & Excavating LLC**
35706 Little Wabana Road
Grand Rapids, MN 55744
Ph: (218) 256-2548
k.wagner3096@gmail.com
Itasca
- LP98F343 **Wagner Construction, Inc.**
CV 3151 Hwy. 53
International Falls, MN 56649
Ph: (218) 283-3700
Fax: (218) 283-1043
dennis@wagnerconstructioninc.com
Koochiching
- LP02F547 **Waldron Trucking & Logging**
CV HF 30882 County Rd. 525
Effie, MN 56639
Ph: (218) 743-3023
spinnermargie@gmail.com
Itasca
- LP20F1073 **Warner Contracting**
HF 47186 County Rd. 37
Deer River, MN 56636
Ph: (218) 929-8060
Cell/Ph2: (218)
warneraustin1973@gmail.com
Itasca
- LP16F971 **Waste Wood Recyclers LLC**
CV CP GR 5077 Jean Duluth Rd.
Duluth, MN 55803
Ph: (218) 428-1477
Cell/Ph2: (218) 349-4019
Fax: (218) 525-5750
wastewoodrecyclers@gmail.com
St. Louis
- LP20F1074 **Watters Excavating**
CV 6199 Rice Lake Road
Duluth, MN 55803
Ph: (218) 576-2664
williewatters@icloud.com
St. Louis
- LP97F200 **White Bros. Logging**
CV CL HF 21730 County 44
Laporte, MN 56461
Ph: (218) 224-2262
Cell/Ph2: (218) 820-8262
swhite@paulbunyan.net
Hubbard



- LP16F975 **White, Jesse**
CV P.O. Box 541
Northome, MN 56661
Ph: (218) 244-9910
dmcken22@hotmail.com
Koochiching
- LP22F1143 **Wood Chucks Tree Service
& Logging**
CL 696 Schroeder Rd. NW
Bemidji, MN 56601
Ph: (218) 556-1453
Beltrami
- LP97F253 **Whitefish Creek Ent., Inc.**
CV 1393 County Rd. 4
Baudette, MN 56623
Ph: (218) 634-2486
Koochiching
- LP11F868 **Wood Forest Products, Inc.**
CV CP P.O. Box 157
Cotton, MN 55724
Ph: (218) 345-6483
peterwood@frontiernet.net
St. Louis
- LP07F676 **Wichern Logging**
CV 2690 State Hwy. 113
Waubun, MN 56589
Ph: (218) 473-2536
Mahnomen
- LP21F1090 **Wood Timber Enterprises, Inc.**
CV 7380 Harris Rd.
Canyon, MN 55717
Ph: (218) 345-6521
Cell/Ph2: (218) 590-9229
Fax: (218) 345-6521
woodtimber@frontier.com
St. Louis
- Provisional **Wickham Logging**
1149 17157 Battle River Rd. NE
CV Kelliher, MN 56650
Ph: (218) 647-8653
Cell/Ph2: (218) 766-4757
Fax: (218) 647-8653
lynnettewickham@yahoo.com
Beltrami
- LP06F664 **Zajac Logging LLC**
CV HF 9526 410th Ave.
Hillman, MN 56338
Ph: (320) 355-2522
Cell/Ph2: (320) 980-0429
zajacelk@jetup.net
Morrison
- LP18F1021 **Williams Wood Products LLC**
CV 1513 76th Ave. NW
Williams, MN 56686
Ph: (218) 766-9924
Cell/Ph2: (218) 766-9924
kfish@wiktel.com
Lake of the Woods
- WD98F279 **Ziembra & Sons, Inc.**
CV 6002 County Rd. 1
Littlefork, MN 56653
Ph: (218) 278-6735
Cell/Ph2: (218) 244-0761
Fax: (218) 278-4152
ziembaloggging@gmail.com
Koochiching



2022 MLEP MEMBERSHIP DIRECTORY

Alphabetical Listing by Company Name

MLEP Wood Dealers

The following two letter codes indicate operation types.

CL Cut to Length

CP Chipper

CV Conventional

GR Grinder

HF Hand Felling

HL Horse Logging

WD97F214 **Benson Timber Company**
22383 Nebish Rd. NE
Blackduck, MN 56630
(218) 835-4525
(218) 835-4526
kbenson@paulbunyan.net
Beltrami

LP97F160 **Northern Forest & Wildlife**
CV CL HF **Manager**
130 Par Ln.
Grand Rapids, MN 55744
(218) 244-1349
tkromy@paulbunyan.net
Itasca

LP97F120 **DeMenge Trucking &
Forest Products LLC**
26205 State Hwy. 210
McGregor, MN 55760
(218) 768-4900
(218) 820-8129
(218) 768-4187
jrdemenge@gmail.com
Aitkin

LP97F156 **Northland Timber Co./
Don Gross & Sons**
CV
Box 247
Blackduck, MN 56630
(218) 835-6688
Beltrami

LP97F199 **Peura Contracting, Inc.**
CV
3325 County Rd. 131
Kettle River, MN 55757
(218) 380-3645
Carlton

WD13F929 **Joe Torgerson Timbers LLC**
CV CL HF 14289 County Road 119
Menasha, MN 56464
(218) 564-5664
(218) 255-3312
(218) 564-6125
jrtorgerson724@outlook.com
Becker

ADVERTISERS INDEX

Choice Insurance	42
Compeer Financial	69
Hedstrom Lumber	108
Klinner Insurance, Inc.	40
Log A Load For Kids	10
Minnesota DNR -Division of Forestry	Inside Back Cover
Minnesota Forest Industries, Inc.	103
Minnesota Power	108
Minnesota Timber Producers Association	10
Packaging Corporation of America	Inside Front Cover
Pomp's Tire Service	42
Ponsse	9
PotlatchDeltic	4
Prairie Trailer	42
Rainy Lake Oil	42
Sappi Fine Paper North America	6, Back Cover
UPM Blandin	108

Jobs *do* 
grow on trees...
 **and we grow A LOT of trees!**

**Minnesota Forest Industries
appreciates your commitment to
making the state's fifth largest
manufacturing industry one that
employs 32,000 and has an annual
economic impact of \$9.9 billion.**



MINNESOTA FOREST INDUSTRIES

minnesotaforests.com



Woodland Stewardship Plan

A *must* for every owner of 20 or more wooded acres!

A Woodland Stewardship Plan is a written long-term plan for your land. It is created by a professional forester based on the goals you identify for your land. Some landowners want to maximize wildlife habitat on their land; others want to maximize income from timber harvests; still others want to promote wildlife but also want to improve their woods for future generations. The important thing is that your plan will reflect your goals for your land.



Who Qualifies? All Minnesota private woodland owners who own 20 or more acres, at least 10 of which are wooded, qualify.

Who Writes the Plan? A professional forester who has been certified to write Stewardship Plans will visit with you, tour your land and write your plan.

How Do I Start? Visit www.dnr.state.mn.us/foreststewardship to find a Stewardship Plan Writer from the DNR your Soil & Water Conservation District and/or private consultants. Any of these foresters can advise on how to obtain a Stewardship Plan.

What Does It Cost? There are charges for Stewardship Plans. For reasonable fees, landowners receive a professional assessment of their land with recommendations on how to best achieve their goals. SFIA enrollment can help defray the costs of putting a plan into place.

What Do I Do With My Plan? This is where your work can begin. Often plans identify areas where seedlings should be planted, or brush cleared or less desirable trees removed. In some cases, your professional forester can advise you about government cost share money available to help purchase seedlings, etc. You needn't accomplish all the tasks in a year but, as you do finish one project after another, you come closer to achieving the goals you identified for your land.

**For more information on Stewardship Plans, including a sample plan, see www.MinnesotaForestry.org.
info@minnesotaforestry.org • 218-879-5100**

**MFA Officers & Directors****Dave Roerick**

President
319 NE 8th Street
Grand Rapids MN 55744
218-256-2405
droerick@gmail.com

Brian Huberty

Vice President
17246 Knox Path
Hastings MN 55033
Cell: 651-829-9119
bhuberty@gmail.com

Nikki Henger

Secretary
PO Box 655
Saint Croix Falls, WI 54024
Cell: 937-974-2814
nicholeh@scramail.com

Bill Sayward

Treasurer
31274 Henselin Road
Grand Rapids MN 55744
218-326-8269
Cell: 218-244-2572
saywardbill@gmail.com

Stan Grossman

Sergeant-At-Arms
3015 S. US Hwy. 169
Grand Rapids, MN 55744
218-252-8572
iws@wcta.net

Greg Wuerflein

116 Brookview Court NW
Isanti MN 55040
763-528-3905
gswuerflein@yahoo.com

Lyle Keller

28814 Gilbertson Drive
Peterson MN 55962
507-875-2215
Cell: 507-272-8883

Ryan Rothstein

110 Second Street S
Suite 128
Waite Park MN 56387
320-251-7800
ryan.rothstein@mn.nacnet.net

John Bathke

PO Box 86
Two Harbors, MN 55616
612-991-5363
john@b-green.us

EX-OFFICIO MEMBERS**John Carlson**

DNR Private Forest
Management Coordinator
500 Lafayette Rd.
St. Paul MN 55155
651-259-5282
john.c.carlson@state.mn.us

Jim Lemmerman

6316 Nashua St.
Duluth MN 55807
218-624-3847
j.lemmerman@charter.net

Bruce ZumBahlen

8203 Innsdale Ave. S
Cottage Grove MN 55016
651-458-0483
zoomerbruce@aol.com



Minnesota Women's Woodland Network

www.mnwwn.org
info@mnwwn.org
facebook.com/MNWWN
Instagram at @MNWWN_

Dear Woodland Owners and Friends,

I hope this letter finds you well and that you are finding time to be in your woods and enjoying nature. We know that spending time outdoors relaxing or tending to our woods is good for our health and well-being. In these difficult times, it's perhaps even more important than ever to be outside.

As I reflect on 2021, I want to thank the members of the MNWWN Board of Directors for all that was accomplished as we adapted to the challenges of the times. We improved our capacity to share information and provide educational opportunities to our members through our monthly newsletter, website blog, webinars, and social media. We found safe, creative ways to connect with our members in person through quarterly "woods walks" and other activities. In 2022, we will continue to build on these accomplishments and plan to increase in-person events across the state. We also hope to create a few more local networks that will help to connect women in their woodland community to learn from and support each other in caring for their land.

The Minnesota Women's Woodland Network recognizes the vital role women play in keeping Minnesota's woods and forests healthy for future generations. We hope to see you in the woods soon!

Barb Spears

President

Minnesota Women's Woodland Network

Sustaining family-owned woodlands through peer learning and building relationships.





MNWWN Board of Directors

EXECUTIVE COMMITTEE

Barb Spears

President
Consulting Forester
TWF Consulting, LLC.
St. Paul, MN
W/C: 651-328-0463
barb@twfllc.com

Ginger Kopp

Vice President/Treasurer
Brainerd, MN 56401
C: 651-728-1506
kopp839@gmail.com
Treasurer@mnwwn.org

Nichole (Nikki) Henger

Secretary
Forestry Program Coordinator
Wild Rivers Conservancy
Osceola, WI
W: 715-483-3300 x 23
nhenger@
wildriversconservancy.org

MEMBERS AT LARGE

Sophia Patane

*Community Engagement
Coordinator*
WaterLegacy
Duluth, MN
W/C: 651-252-7680
sophia@waterlegacy.org

ADVISORY

Kathy Ahlers

MPA Organizer
Master of Public Affairs
Twin Cities Organic &
Green Meetup Group
ahle0009@umn.edu

Jan Bernu

Consulting Forester
Two By Forestry
Cloquet, MN
C: 218-343-2436
W: 218-879-4433
twoxforestry@gmail.com

Cheryl Jirik

Landowner
Owner, Landscape
Restoration, Inc.
Webster, MN
W/C: 612-590-9395
cheryl@landscape-
restoration.com

Lara Lau-Schommer

*Community Outreach
Director*
MNState Horticultural Society
Roseville, MN
W: 651-643-3601
lara@northerngardener.org

EX-OFFICIO MEMBERS

Angie Gupta

Extension Educator
University of Minnesota
Rochester, MN
W: 507-280-2869
agupta@umn.edu

Jennifer Teegarden

CFM Outreach Specialist
MN DNR, Division of Forestry
St. Paul, MN
W: 651-259-5285
jenniferteegarden@state.mn.us

John Bathke

Liaison Board Member
Minnesota Forestry
Association
Timber Ghost Realty/B-Green,
Inc.
Two Harbors, MN
612-991-5363
john@b-green.us



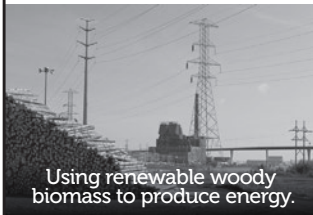
1504 Gunflint Trail
Grand Marais, MN 55604
218-387-2995

Buying 16' Saw Logs Red Pine, White Pine, & Spruce

For specs and a contract please call:

Director - Chris Hegg: 218-370-0312
WI/Duluth - Steve Horndt: 586-596-2232
Iron Range - Jeff Elliott: 218-750-2700

Proud to serve the forest products industry of Minnesota for more than 80 years.



Using renewable woody biomass to produce energy.



AN ALLETE COMPANY

Contact: Matt Radzak
218.355.3543

UPM **BIOFORE** **BEYOND** FOSSILS



Blandin Paper Company is purchasing aspen, balsam fir, and spruce pulpwood and standing timber.

Adam Sutherland (218) 244-5393
Jim Berkeland (218) 244-4574



**WE BUY SEEDS AND CONES FROM
WOODLAND OWNERS IN THE
FALL AND WINTER**

Learn more at mndnr.gov/seedcone

A managed forest is a healthy forest...



and profitable forest.

If you are a private landowner with 20 or more acres of forested land, you are eligible for Sappi Fine Paper North America's Sustainable Forestry Services in the Great Lakes region.

Why sustainable forest management?

The benefits are three-fold — a managed forest is healthier, attracts more wildlife and you profit from the stumpage Sappi harvests. Our program promotes individualized forest management and harvest techniques to provide healthier growth of your forest.

Call (218) 878-4312 to see how you can profit from a managed forest.

sappi